

Perry County

Locally Developed Coordinated Public Transit-Human Services

Transportation Plan

2022-2026

Perry County Job and Family Services

Director, Cheryl Boley

For more information about this plan please contact:

Mobility Manager, Lisa Leckrone

Email: melissa.leckrone@jfs.ohio.gov Phone: (740) 342-5423

Funding for the development of this plan was provided by ODOT



TABLE OF CONTENTS

Contents

Executive Summary	3
I. Geographic Area	5
II Population Demographics	7
III. Assessment of Available Services	12
Inventory of Transportation Providers	12
Existing Transportation Services	14
Assessment of Community Support for Transit	23
Safety	24
Vehicles	26
Summary of Existing Resources	35
IV. Assessment of Transportation Needs and Gaps	36
Local Demographic and Socio-Economic Data	37
Analysis of Demographic Data	39
General Public and Stakeholder Meetings/Focus Groups	40
Surveys	41
Challenges to Coordinated Transportation.....	44
Summary of Unmet Mobility Needs	45
V. Goals and Strategies	45
Developing Strategies to Address Gaps and Needs	45
Goals #1-5:	46
VI. Plan Adoption	52
Appendix A: List of Planning Committee Participants	53
Agency Representation	53
Appendix B: List of Annual Reviews and Plan Amendments	54
Annual Review [November 3, 2026]	55
Amendment [DATE]	55
Appendix C: Definitions	55

Executive Summary

This plan is the Public Transit-Human Services Transportation Plan for Perry County. The plan was initially developed in 2014, expiring 12-31-2021.

The Current plan covers period January 1, 2022, through December 31, 2026.

The annual update for 2023 has been submitted to ODOT by 12-31-2022 for approval.

This plan fulfills the requirements of the Federal Transit Administration (FTA) under the Fixing America's Surface Transportation (FAST) Act, signed into law as a reauthorization of surface transportation programs through Fiscal Year 2026. According to requirements of the FAST Act, locally developed coordinated public transit-human services transportation plans must be updated to reflect the changes established by the FAST Act legislation. The FAST Act applies new programs and rules for all Fiscal Year 2022 funds and authorizes transit programs for four (4) years.

Transportation is a critical component of the communities in Perry County. Transportation provides access to jobs, education, healthcare, human services and allows all community members, including older adults and people with disabilities, to live independently and engage in community life. It is the purpose of this plan for local stakeholders to work collaboratively to do the following activities:

1. Identify all community resources including:
 - Perry County Commissioners
 - Perry County Mobility Management
 - Region 8 Mobility Solution Center
 - Perry County Transit
 - Perry County Transit Medicaid Billing
 - Perry County Job and Family Services
 - ODOT
 - FTA
 - Contract Sources
 - General Public
 - Perry County Courts
 - Perry County Schools
 - Perry County Agencies
 - Perry County Board of Developmental Disabilities
 - Perry County Senior Center
 - Perry Behavioral Health Choices
 - Perry County Health Department
 - Perry County Veterans Service Commission
 - Hopewell Health Center
 - Allwell Behavioral Health Services
 - Fairview Assisted Living
 - Employers
 - Non-Profits

- Creating Healthy Communities Project funded through the Ohio Department of Health
- HapCap/PC CCMEP
- Buckeye Hills Regional Council
- Mid-Ohio Regional Planning Commission
- Genesis Perry County ER
- St. Vincent DePaul
- Perry County District Library
- Perco, Inc.
- Northern Local Schools
- SKLD New Lexington
- New Lexington Schools

2. Identify and Prioritize community transportation needs

- Sustaining Mobility Management for Transportation Coordination
- Countywide Safety Campaign
- Marketing, Education, and Additional Options for Transportation
- Low-Cost Transportation for Underinsured /Uninsured
- Expansion of Services and Projects

3. Establish a clear plan for achieving shared goals

Community collaboration is the most effective way to achieve Perry County's shared goals. Transportation is needed and relied upon for medical appointments, employment, daycare, school, after school programs, community events and everyday essentials. The Mobility Manager is able to focus on cultivating partnerships with various agencies and determine how to effectively meet transportation needs. The Mobility Manager will work with other transit focused organizations in securing funding for the area to help expand reliable transportation to the citizens that need it most. Growing and developing new partnerships will help provide routes and services that reach our consumer base while also supporting businesses and a healthy community.

Fundamental to the Coordinated Transportation Plan process is the active and meaningful involvement of stakeholders. For projects selected for funding under the Section 5310 program, participation in planning activities must include participation and/or representation of the following, at minimum:

- Seniors and Elderly
- Individuals with disabilities
- People with low incomes
- Public, private and non-profit transportation providers
- Human services providers
- Public Health services
- The general public

In order to ensure participation from the above groups the following stakeholder involvement activities were performed:

1. Public meetings were held quarterly by public notice, virtual, or email invite.
2. Planning committee meetings were held at Perry County Job and Family Services and hosted online via Microsoft Teams.

This plan was developed and adopted by a planning committee. More information about the planning committee can be found in Appendix A.

I. Geographic Area

Perry County Ohio is located in the southeast area of the State.

Map 1: Basic map of the geographic area Adjacent counties are

Licking County (North), Muskingum (County Northeast),

Morgan County (Southeast), Athens County (South), Hocking County (Southwest) and Fairfield County (West).

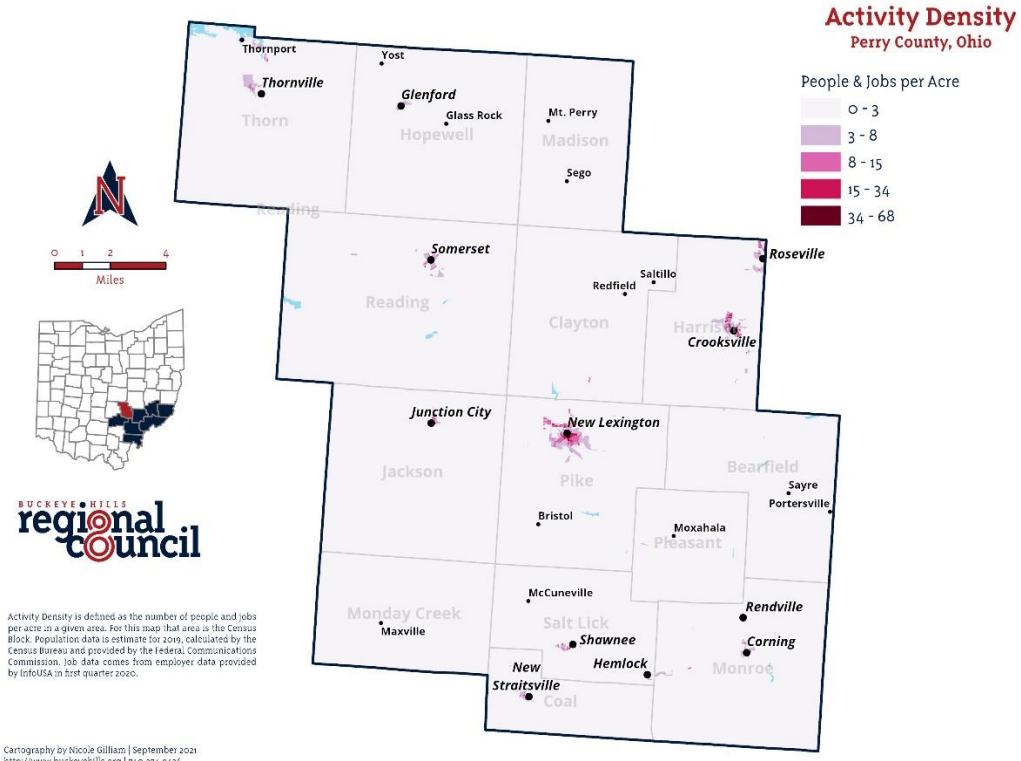
Founded on March 1, 1818 from parts of Fairfield, Washington, and Muskingum Counties

it was the 55th county to be formed in Ohio.



The area is known to be economically depressed with a high rate of poverty (13.1% 2022 Federal Poverty Report Ohio DSA) and an unemployment rate of 4.3% (ODJFS OWD October 2022). These factors contribute to low socioeconomic status among Perry County residents. Perry County is comprised of small communities separated by miles of state highway. According to the Ohio Department of Transportation (ODOT), the county consists of 413 square miles with 373 miles of ODOT maintained state highway. Due to its rural location and its low-income population, travel between communities can be difficult and costly for those without reliable transportation.

Map 2: Major trip generators in the geographic area.



Activity Density is defined as the number of people and jobs per acre in a given area. For this map that area is the Census Block. Population data is estimate for 2000, calculated by the Census Bureau and provided by the Federal Communications Commission. Job data comes from employer data provided by InfoUSA in first quarter 2006.

Cartography by Nicole Gilliam | September 2021
<http://www.buckeyehills.org> | 760-374-9436
 For information about data sources, please contact a GIS Specialist at Buckeye Hills

II. Population Demographics

Chart 1: Total Population Current and Projected for Five Years

Chart 1 illustrates the change in population for Perry County from 2005 through projected numbers in 2025. Based on previous census information, Perry County's population is projected to increase throughout the next five years.

Source: Census Reporter/Profiles
 Source: Ohio Development Services Agency

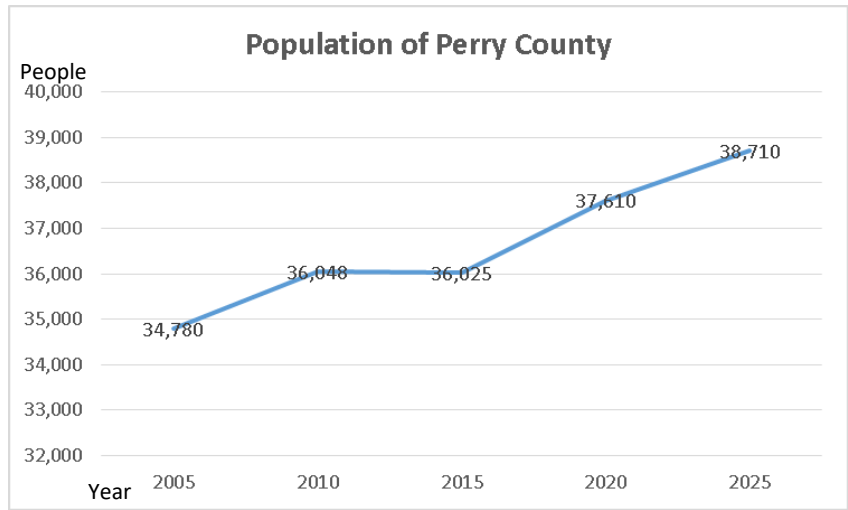


Chart 2: Total Population by Age Group

Chart 2 illustrates population by age category based off the 2020 Census.

Source: 2020 Census Reporter/Profiles

Age Category	Population	Population Percentage
Under 18 years of age	8,530	22.4%
18 to 64 years of age	21,646	61%
Over 65 years of age	5,846	16.7%

Chart 3: Total Population by Race

Chart 3 illustrates Perry County population by race compared to the United States.

Race and Hispanic Origin	Perry County	United States
White alone, percent, July 1, 2019, (V2019)(a)	97.19%	61.6%

Black or African American alone, percent, July 1, 2019,

(V2019)(a)

0.39%

12.4%

American Indian and Alaska Native alone, percent, July 1, 2019, (V2019)(a)	0.34%	1.1%
Asian alone, percent, July 1, 2019, (V2019)(a)	0.13%	6%
Native Hawaiian and Other Pacific Islander alone, percent, July 1, 2019, (V2019)(a)	0.15%	0.2%
Two or More Races, percent, July 1, 2019, (V2019)	0.27%	2.9%
Hispanic or Latino, percent, July 1, 2019, (V2019)(b)	0.03%	42.2%
White alone, not Hispanic or Latino, percent, July 1, 2019, (V2019)	96.61%	57.5%

Source: United States Census Bureau

(Note: 2020 Data available November 30, 2021)

Chart 4: Number and percentage of people with disabilities

Chart 4 illustrates a total of 6,392 individuals with disability (17.7% of population) living in Perry County.

Source: 2019 United States Census Bureau
Population estimates

Disabled Individuals	Total Population	Population percentage
Under 18	717	8.4%
18-64	3,442	15.9%
64+	2,233	38.2%

Chart 5: Number and percentage of households with incomes below the federal poverty level

Chart 5 illustrates the number and percentage of households living below the federal poverty level. This number was based on 13,500 total households averaging 2.6 persons per household.
Source: 2019 Census Recorder/Profiles

Low Income Households	Number of Households	Percent of Households
Supplemental Security Income	1,474	10.9%
Cash Public Assistance Income	281	2.1%
SNAP Benefits	3,155	23.4%

Chart 6: Number and percentage of individuals with incomes below the federal poverty level

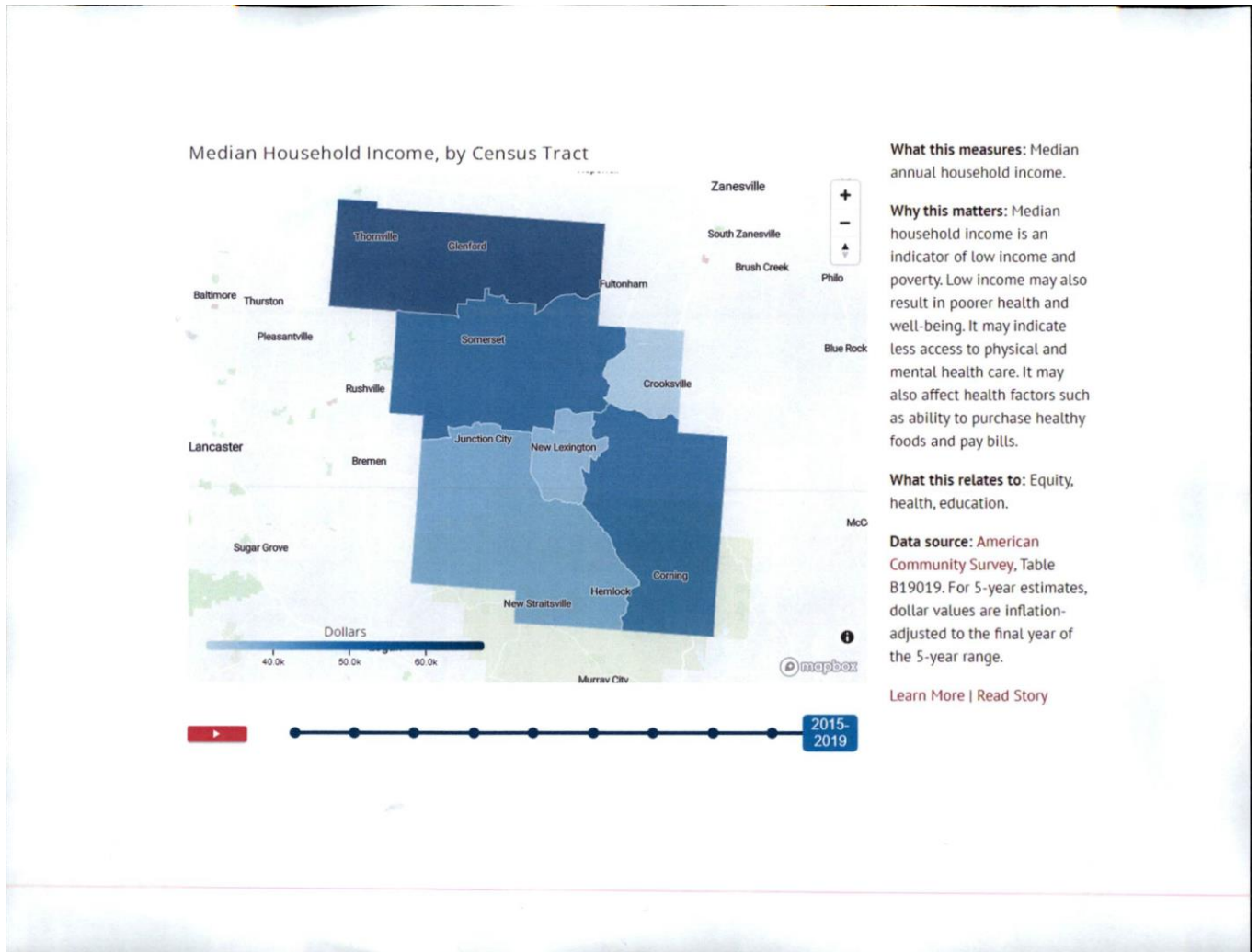
Chart 6 illustrates 13.1% of individuals with incomes below the federal poverty level distributed by age

Source: July 2021 United States Census Bureau

Individuals Below the Federal Poverty Level	Number of Individuals	Percent of Population
Under 18	2,320	23.6%
18 to 64 years	3,896	18%
Over 65 years	696	17.6%

Map 3: Income by Location

Map 3 illustrates the income by location in Perry County. This chart demonstrates that the need for low-cost transportation options is needed throughout the southern part of the county.



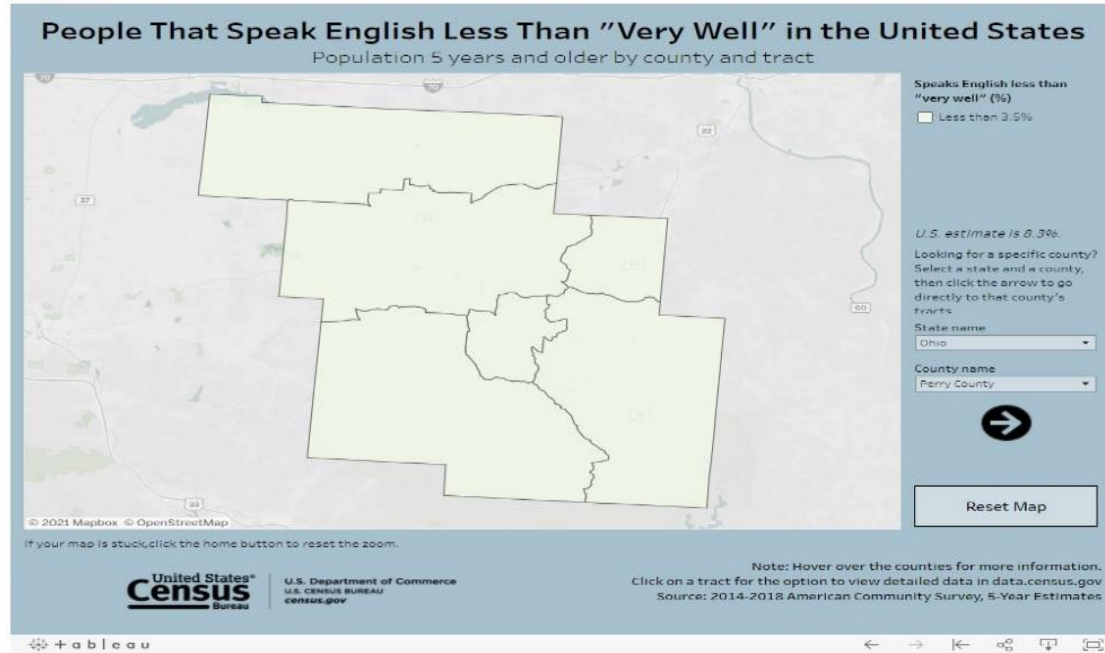
Source: Data USA

Maps 4&5 : Maps of population that speak English "Less than very well"

Perry County Map:

People That Speak English Less Than "Very Well" in the United States

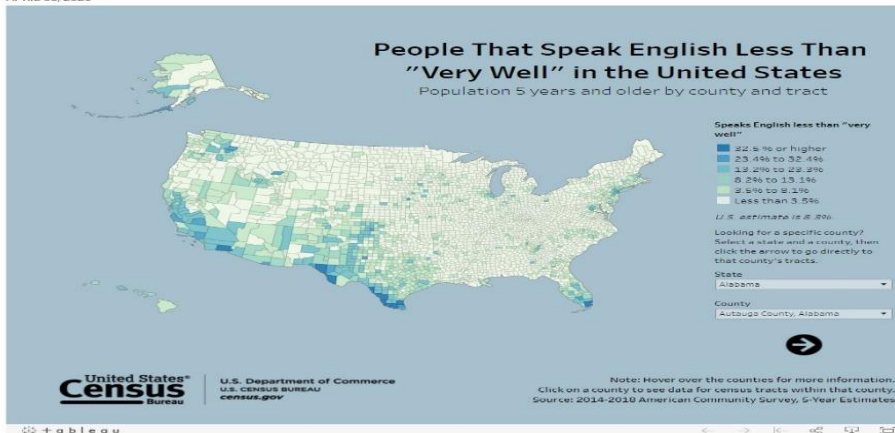
APRIL 08, 2020



United States Map:

People That Speak English Less Than "Very Well" in the United States

APRIL 08, 2020



III. Assessment of Available Services

Conducting an evaluation of service provider capabilities and analyzing the existing gaps and duplications of services for transportation resources in each community, provides transportation planners with the information needed to implement changes that will improve the network of transportation resources and services in Perry County and across county lines.

The lead agency identified stakeholders to participate in the assessment of available services. These stakeholders included those who were represented in the current or past planning committees, as well as others who the planning committee identified as being appropriate stakeholders.

Interviews were conducted with each of the identified stakeholders.

The purpose of the interview was to offer the stakeholders an opportunity to discuss the specific transportation services, gaps, needs, and priorities for their respective service areas or communities.

When applicable, information reported in the previous coordinated plan was used to supplement information gathered during this planning effort, in order to provide updated and accurate figures.

Inventory of Transportation Providers

Agency Providers	Direct Transportation Services	Subsidized Transportation on a Local Level	Administers Transportation Programs	Arranges Transportation on Behalf of Individuals
Perry County Department of Job and Family Services	x	x	x	x
Crooksville Exempted Village School District	x	x	x	x
New Lexington Schools	x	x	x	x
Northern Local School District	x	x	x	x
Southern Local School District	x	x	x	x
Sech-Kar Company	x	x	x	x
Perry County Juvenile Court	x	x		x
Perry County Children Services	x	x		x
HAPCAP/SE Ohio Food Bank	x	x		x
Perry County Transit	x		x	x
Perry County Behavioral Health Choices	x			x
PerCo, Inc.	x		x	x

Mount Aloysius	x			x
On Time Transportation	x		x	x
Perry County Senior Center	x		x	x
Fairview Assisted Living	x	x	x	x
Perry County Veterans Service Commission	x		x	x
Genesis Community Ambulance	x			
Portsmouth Emergency Ambulance	x			
Residential, Inc.	x			x
Perry County RSVP	x			x
Perry County Board of Development Disabilities		x		

Existing Transportation Services

The following information is based on updated contact made with the transportation service providers. A total of 9 organizations provided information about their services.

List of Transportation Service Providers

Agency Name:	Transportation Service Type:	Other Services Provided:	Contact Information:	Hours:	Service Area:	Eligibility Requirements:	Website:
Perry County Transit	Public Transportation	Contracted Services	740-342-2810	6am-6pm M,T,R,F, 6 am-9pm W, 8am-12pm Sat.	Perry, up to 100 Miles from Transit	Open to Public, E&D Applications Available	PerryCountyTransit.com
Sech-Kar	Client and Employee Transportation	None	740-342-4030	7:30am- 3:30pm M-F,	Perry	Various Programs/Eligibility Differs	Sechkar.com
Perry County Job and Family Services	Public and Staff Transportation	None	740-342-3551	8:00am- 4:30pm M-F	Varies depending on program	Various Programs/Eligibility Differs	Perryjfs.org

Perry Behavioral Health Choices, Inc	Client and Employee Transportation	None	740-342-1992	As required	Perry County, 6 County Catchment Area (Coshocton, Guernsey, Morgan, Muskingum, Noble and Perry Counties), as Required for Client needs	PBHC Clients and Employees	Perrybhc.org
Mount Aloysius	Client and employee transportation	None	740-342-3343	As needed	Perry County and as needed across the state	Mount Aloysius residents and employees	Mountalloysius.org
PerCo,Inc	Client and employee transportation	None	740-342-5156	7:30am-3:30pm	Perry County and surrounding counties across the state	DD Participant	Facebook Percoinc.com
Perry County Senior Center	Client and employee transportation	None	740-342-2149	8:00am-4:00pm	Perry County and surrounding counties across the state	Senior Population	Facebook Perrycountyohio.net
Perry County Veterans Service Commission	Client and employee transportation	None	740-342-2536	8:30am-4:30pm Closed the last Monday of the month	Within the VA VISN 10 Region	Veteran Population	Facebook Perrycountyohio.net

Fairview Assisted Living	Client and employee transportation	None	740-342-1213	24/7	Perry County	Fairview Resident and Employees	Perrycountyohio.net
---------------------------------	-------------------------------------------	-------------	---------------------	-------------	---------------------	----------------------------------------	----------------------------

The table below provides a summary of the characteristics of the participating transportation providers and organizations that purchase transportation on behalf of consumers.

Table 1: Organizational Characteristics

Agency Name	Directly Operates Transportation (Yes/No)	Purchases Transportation from Another Agency (if Yes, Who?)	Legal Authority (Private Non-Profit, Private For-Profit, Public Non-Profit,)	Number of Annual One-Way Passenger Trips	Average Number Trip Denials per Year	Are Vehicles Only Available for Human Service Agency Clients (Y/N)*
Perry County Transit	Yes	No	Public, Non-profit	45,094	850	N
Sech-Kar	Yes	Yes, Perry County Transit	Private	-	-	N
Perry County Job and Family Services	Yes	Yes, Perry County Transit and Private Individuals	Public	10,348	-	Yes-Services available only to clients and employees
Perry Behavioral Health Choices, Inc.	Yes	No	Private, Non-Profit	-	-	Yes-Services available only to clients and employees

Mount Aloysius	Yes	No	Private, Non-Profit	-	-	Yes-Services for clients and employees
PerCo	Yes	No	Private, Non-Profit	-	-	Yes-Services for clients and employees
Perry County Senior Center	Yes	Yes	Public, Non-Profit	-	-	Y
Perry County Veterans Service Commission	Yes	No	Public, Non-Profit	1,318	0	Yes-Veterans and Spouse
Fairview Assisted Living	Yes	Yes	Private, Non-Profit	-	-	No

* Answering “Yes” indicates that your agency is closed door. Your agency is considered closed door if you ONLY provide transportation to your facility as a courtesy or if you ONLY serve a particular clientele that are enrolled in your agency programs (i.e. members of a sheltered workshop, or residents in a nursing home). Answering “No” indicates that your agency is open door. This means the service is open to the public or a segment of the general public defined by age, disability, or low income. For example, if an agency provides general transportation for anyone in the community who is over the age of 60, they are considered “open door”. For example, an individual who is 60 or over can request transportation to a doctor’s appointment or the grocery store regardless of their affiliation with your agency.

The participating organizations provide a wide range of transportation including FIXED ROUTE, ADA PARATRANSIT, DEMAND RESPONSE, ONDEMAND, AND HUMAN SERVICE AGENCY FIXED ROUTES. Five of the participating organizations provide services on weekdays. Three operate transportation on Saturdays and two on Sundays. Evening services after 6:00 p.m. are operated by three organization. The following table depicts the transportation service characteristics by agency.

Table 2: Transportation Service Characteristics

Agency Name	Mode of Service	Days & Hours of Operation	Provides Medicaid-Eligible Trips (Y/N)	Level of Passenger Assistance Provided	Training Courses Required for Drivers
Perry County Transit	Rural Transit	M, T, TH, F 6am-6pm Wed. 6am-9pm Saturday 8am-12pm	Y	Curb to Curb	Drug & Alcohol Blood Borne Pathogens Wheelchair Securement DRIVE (transporting older disabled passengers) Marcs radio communication CORSA NIMS Confidentiality CPR & First Aid Sensitivity and Diversity Training Civil Rights
Sech-Kar	Rural Transit and Employees	M-F 7:30am3:30pm	Y	-	Yearly inspections on all vehicles Vehicle safety inspection pre-trip Certified in CPR, First Aid, and Blood Borne Pathogens Trained on Hoyer lift and wheelchair lift and how to tie down wheelchairs Trained on each consumer they transport and review ISP

Perry County Job and Family Services	Rural Transit, Private, Individuals and Employees	8:00am-4:30pm M-F	Y	Door to Door	Blood Borne Pathogens CPR & First Aid Confidentiality Civil Rights CORSA
Perry Behavioral Health Choices, Inc.	Employees	24/7 as needed for clients and employees	Y	Door to door	Annual Vehicle Safety Training CPR & First Aid Blood Borne Pathogens Confidentiality
Mount Aloysius	Employees	24/7 as needed for clients and employees	Y	Door to door	One time drivers training CPR & First Aid Blood Borne Pathogens Confidentiality
PerCo,Inc	Private	7:30am-3:30pm M-F	Y	Curb to Curb	Drug & Alcohol Blood Borne Pathogens Wheelchair Securement CPR & First Aid
Perry County Senior Center	Employees	8:00am-4:00pm M-F	N	Curb to Curb	Drug & Alcohol Blood Borne Pathogens CORSA NIMS Confidentiality CPR & First Aid

Perry County Veterans Service Commission	Client and Employees	8:30am-4:30pm M-F Closed last Monday of each Month	N	Curb to Curb	Drug & Alcohol Blood Borne Pathogens CORSA Confidentiality Pre & Post Trip Inspection Yearly County Safety Training
Fairview Assisted Living	Employees	24/7	N	Curb to Curb	Blood Borne Pathogens CPR & First Aid Confidentiality Civil Rights CORSA

Transportation-related expenses and revenues also differ by organization. FTA, ODOT and Contracted services are common revenue sources for transportation operators in Perry County. The table below provides a summary of expenses and revenues for public and non-profit transportation programs.

Table 3: Transportation-Related Expenses and Revenues

Agency Name	Fare Structure	Donations Accepted (Y/N)	Number of Full-Time & Part-Time Drivers	Number of Full-Time & Part-Time Schedulers/ Dispatchers	Revenue Sources (most recent Fiscal Year)	Total Annual Transportation Expenses
Perry County Transit	Rates/Maps	N	16 full-time & 11 part-time	5	Contracts, ODOT, FTA, Local Fares, Medicaid	\$1,970,000
'Perry County Job and Family Services	None	N	2 Caseworkers	0	Program Allocations	-
Mount Aloysius	None	Y	70	0	Medicaid	-

Perry County Veterans Service Commission	None	N	2 Full-Time and 1 Contact	1	Perry County, ORC 5901	\$74,957.39
-------------------------------------------------	------	---	---------------------------	---	------------------------	-------------

The following table provides basic information about transportation options other than the traditional public and human services transportation. Transportation options might include bike share, ride share, intercity, or taxi services, and more.

Table 4: Alternative/ Active Transportation Options

Transportation Option	Availability	Cost	Usage	Service Area
Ride Sharing	As Needed	None	Employment	Perry and Surrounding Counties
Perry County Bike Share	Upon Request	None	Employment/Shopping/Recreation	Perry County Residents
Alternate Motorized Vehicles	As Needed	None	Medical/Shopping/Recreation	Perry County

The following table provides basic information about local travel training program options.

Table 5: Transportation Resources

Transportation Resource	Availability	Cost	Usage	Service Area
Perry County Job and Family Services/Mobility Management	M-F 7:30 a.m. – 4:00 p.m.	None	As requested,	Perry County

The following table illustrates the technology used by each transportation provider for scheduling, dispatching, and/or GPS tracking vehicles.

Table 6: Technology

Agency Name	Name of Scheduling Software	Do you have an App for Transportation (Y/N)?	Name of Dispatching Software	AVL System/ GPS (Y/N)
Perry County Transit	Ecolane	Y	Ecolane Communications: MARCS	Y
Perry County Job and Family Services NEMT, Perry County Mobility Management	Knomatic, Netgas, EcoLane	Y	EcoLane	Y

Assessment of Community Support for Transit

1. Perry County Transit

- Contract sources (PCJFS, PCBDD, MVESC, Fairview Assisted Living, HAPCAP, JFS, SechKar, Children Services, Family & Children First, Local School Districts)
- General Public
- Perry County Court
- Employees
- County Support (Commissioners)

2. Perry County Job and Family Services

- General Public for Funded Programs
- Employees
- NEMT

3. Perry County Health Department

- Creating Healthy Communities Project funded through the Ohio Department of Health (ODH).

4. Perry County Active Transportation Team

- Works to increase education and awareness for active transportation that includes “Your Move Ohio”, “Walk.Bike.Ohio”, Safe Routes to School, and ODOT/ODH supported initiatives.
- Completion of the Perry County Active Transportation Plan adopted 12-19-2019.
- Perry County Bike Share Launched 12-5-2022.
- Continue partnering to increase opportunities for active transportation through the procurement of funding and the development of community initiative.

5. Perry Behavioral Health Choices, Inc.

- Encourages clients to use Transit
- Clients
- Employees

6. Mount Aloysius

- Increase access to community resources/integration

7. Region 8 Mobility Solutions Center

- Coordinates resources to assist in resolving transportation gaps and barriers on behalf of customers
- Coordinating with Region 8 counties to better serve customers across county lines

Safety

1. Perry County Transit

- Yearly County Safety Training for employees
- Safety Sensitive Position Training
- Distracted/ Defensive Driving Training
- Weather Safety Training
- Blood Borne Pathogens Training
- Drug & Alcohol
- Wheelchair Securement
- MUJ and UI
- Covid-19 CDC Requirement
- Human Trafficking
- ADA Requirements
- CPR – First Aid
- Daily Vehicle Inspection
- NIMS

2. Perry County Job and Family Services

- DRIVE (transporting older disabled passengers)
- CORSA
- NIMS
- Confidentiality
- CPR - First Aid
- RTAP
- Pre-Trip Inspection
- Annual Vehicle Inspection
- Yearly County Safety Training for employees
- Safety Sensitive Position Training
- Blood Borne Pathogens Training

3. Perry County Active Transportation Team

- Countywide Safety Campaign revolving around the “Your Move Ohio” promotional material.

4. Mount Aloysius

- Driver Safety Training
- Wheelchair Safety Training
- CPR/First Aid
- Blood Borne Pathogens
- Confidentiality

5. Sech-Kar

- Yearly inspections on all vehicles
- Vehicle safety inspection pre-trip
- Certified in CPR, First Aid, and Blood Borne Pathogens
- Trained on Hoyer lift and wheelchair lift and how to tie down wheelchairs
- Trained on each consumer they transport and review ISP

6. PerCo,Inc

- Drug & Alcohol
- Insurable
- Blood Borne Pathogens
- BMV Abstract
- Wheelchair Securement
- Background Check
- CPR & First Aid
- Physical and Drug Screen
- Valid Driver's License
- MUI, UI, and HIPPA Training
- Certifications for Direct Support
- Annual Vehicle Inspections
- Daily Pre-Trip/Post Trip Inspection

8. Perry County Senior Center

- Drug & Alcohol
- Blood Borne Pathogens
- CORSA
- NIMS
- Confidentiality
- CPR & First Aid

8. Perry County Veterans Services

- Drug & Alcohol
- Blood Borne Pathogens
- Fire Extinguisher
- First Aid Kits
- Safety Equipment

Vehicles

Survey/Interview participants listed a combined total of 89 vehicles. Approximately 47.2% of the vehicles are wheelchair accessible, resulting in an increase of ADA accessible vehicles. A vehicle utilization table is provided at the end of this chapter.

Some of the transportation providers provide at least one wheelchair accessible vehicles, while the local rural transportation organization has a 100% entire fleet of wheelchair accessible vehicles.

Perry County Transit (PCT) utilizes their wheelchair accessible vehicles daily to provide transportation to the general public including the elderly and disabled population, throughout the community. PCT is contracted with the local Board of Developmental Disabilities to provide transportation to and from daily activities including employment.

Mount Aloysius also uses their vehicles to provide transportation for their disabled population on a daily basis.

As vehicles age, they require additional maintenance, may break down more often, and become costly to operate. Vehicle replacement, based on age, Milage, and condition, is vital to the overall cost effectiveness of the transportation services provided.

Agency	Total Vehicles	Wheelchair Accessible Vehicles	Percent of Operation Fleet Wheelchair Accessible
Perry County Transit	31	31	100%
Perry County Job and Family Services	8	0	0%
Perry Behavioral Health Choices, Inc.	10	0	0%
Mount Aloysius	16	4	25%
HAPCAP	1	0	0%
PerCo	9	4	44%
Senior Center	5	0	0%
Fairview Assisted Living	2	0	0%
Perry County Veterans	3	0	0%
Total	89	43	48%

Table 7: Vehicle Utilization Table

Veh #	Make	Model	Year	Vin #	Capacity	WC Capacity	Days of the Week Vehicle is in Service	Service Hours	Vehicle Condition	Program to which Vehicle is Assigned (if applicable)	Service Area
Perry County Transit											
2	Ford	E-350	2016	1FDEE3FL7GDC 19045	10 Pass.	2 W/C	6	6-6 M,T,R,F,& W 6 AM-9 PM 8-12 Sat	80		Perry
3	Ford	E-350	2016	1FDEE3FL9GDC1 9046	10 Pass.	2 W/C	6	6-6 M,T,R,F,& W 6 AM-9 PM 8-12 Sat	80		Perry
6	Dodge	Caravan	2016	2C7WDGB5GR3 13713	5 Pass.	1 W/C	6	6-6 M,T,R,F,& W 6 AM-9 PM 8-12 Sat	65		Perry
7	Dodge	Caravan	2016	2C7WGBG1GR1 76544	5 Pass.	1 W/C	6	6-6 M,T,R,F,& W 6 AM-9 PM 8-12 Sat	65		Perry
111	Dodge	Caravan	2019	2C7WDGBG2KR683770	3 passenger	1 w/c	5	6-6 M,T,R,F,& W 6 AM-9 PM 8-12 Sat	100		Perry
112	Dodge	Caravan	2019	2C7WDGBG5KR793776	3 Passenger	1W/C	5	6-6 M,T,R,F,& W 6 AM-9 PM 8-12 Sat	100		Perry
113	Dodge	Caravan	2019	2C7WDGBG8KR793707	3 Passenger	1W/C	5	6-6 M,T,R,F,& W 6 AM-9 PM 8-12 Sat	100		Perry

114	Dodge	Caravan	2019	2C7WDGBG7KR795416	3 Passenger	1W/C	5	6-6 M,T,R,F,& W 6 AM-9 PM 8-12 Sat	100		Perry
-----	-------	---------	------	-------------------	-------------	------	---	------------------------------------------------	-----	--	-------

32	Dodge	Caravan	2015	2C7WDGBGXFR 541978	5 Pass	1 W/C	6	6-6 M,T,R,F,& W 6 AM-9 PM 8-12 Sat	55		Perry
34	Ford	E-350	2016	1FDEE3FSXGDC 53505	10 Pass.	2 W/C	6	6-6 M,T,R,F,& W 6 AM-9 PM 8-12 Sat	80		Perry
35	Ford	E-350	2016	1FDEE3FS8GDC 46424	10 Pass.	2 W/C	6	6-6 M T R F, Wed 6 - 9 Sat 8-12	80		Perry
37	Ford	E-350	2016	1FDEE3FS0HDC 17792	14 Pass.	2 W/C	6	6-6 M,T,R,F,& W 6 AM-9 PM 8-12 Sat	80		Perry
46	Ford	E-350	2017	1FDEE3FS1HDC 62000	12 Pass.	2 W/C	6	6-6 M,T,R,F,& W 6 AM-9 PM Sat 8-12	100		Perry
47	Ford	E-350	2017	1FDEE3FS1HDC 61999	12 Pass.	2 W/C	6	6-6 M,T,R,F,& W 6 AM-9 PM 8-12 Sat	100		Perry
48	Ford	E-350	2017	1FDEE3FS1HDC 60988	12 Pass.	2 W/C	6	6-6 M,T,R,F, W 6 AM-9 8-12 Sat	100		Perry
49	Ford	Transit 250	2017	FTYR2CM98HKB 54452	7 Pass.	2 W/C	6	6-6 M,T,R,F,& W 6 AM-9 PM 8-12 Sat	100		Perry
50	Ford	Transit 250	2017	1FTYR2CMOHK B54453	7 Pass.	2 W/C	6	6-6 M,T,R,F,& W 6 AM-9 PM 8-12 Sat	100		Perry
51	Ford	Transit 250	2017	1FTYR2CM2HKB 54454	7 Pass.	2 W/C	6	6-6 M,T,R,F,& W 6 AM-	100		Perry

116	Dodge	Caravan	2019	2C7WDGBG4KR793767	3 Passenger	1W/C	5	6-6 M,T,R,F,& W 6 AM-9 PM 8-12 Sat	100		Perry
52	Ford	E350	2017	1FDEE3FSOHDC 78608	14 Pass	2 W/C	6	6-6 M,T,R,F,& W 6 AM-9 PM 8-12 Sat	100		Perry
53	Dodge	Caravan	2018	2C7WDGBG7JR2 43218	5 Pass.	1 W/C	6	6-6 M,T,R,F,& W 6 AM-9 PM 8-12 Sat	100		Perry
54	Dodge	Caravan	2018	2C7WDGBG7JR2 43221	5 Pass.	1 W/C	6	6-6 M,T,R,F,& W 6 AM-9 PM 8-12 Sat	100		Perry
55	Ford	E350	2018	1FDEE3FSOJDC2 0973	12 Pass	2 W/C	6	6-6 M,T,R,F,& W 6 AM-9 Sat 8-12 8-12 Sat	100		Perry
56	Ford	Transit 250	2018	1FTYR2CM9JKB21943	7 Pass	2 W/C	6	6-6 M,T,R,F,& W 6 AM-9 PM 8-12 Sat	100		Perry
57	Ford	Transit 250	2018	1FTYR2CM0JKB21944	7 Pass	2 W/C	6	6-6 M,T,R,F,& W 6 AM-9 8-12 Sat	100		Perry
110	Dodge	Caravan	2019	2C7WDGBG1KR683744	5 Pass	1 W/C	6	6-6 M,T,R,F,& W 6 AM-9 PM 8-12 Sat	100		Perry
206	Ford	Transit 250	2019	1FTYR2CM5KKB39518	8 Pass	2 W/C	6	6-6 M,T,R,F,& W 6 AM-9 PM Sat 8-12	100		Perry
314	Ford	E350	2019	1FDEE3FS3KDC61308	12	2 W/C	6	6-6 M,T,R,F, & W 6 AM-9 PM 8-12 Sat	100		Perry
315	Ford	E350	2019	1FDEE3FS7KDC61307	12	2 W/C	6	6-6 M,T,R,F,& W 6 AM-9 PM 8-12 Sat	100		Perry

117	Dodge	Caravan	2019	2C7WDGBG0KR795421	3 Passenger	1 W/C	5	6-6 M,T,R,F,& W 6 AM-9 PM 8-12 Sat	100		Perry
206	Ford	Transit 250	2019	1FTYR2CM5KKB39518	1 Passenger	2 W/C	7	6-6 M,T,R,F,& W 6 AM-9 PM 8-12 Sat	100		Perry
207	Ford	Transit 250	2020	1FDAX2C8XLKB75759	2 Passenger	2 W/C	9	6-6 M,T,R,F,& W 6 AM-9 PM 8-12 Sat	100		Perry
314	Ford	E-350	2019	1FDEE3FS3KDC61308	10 Passenger	2 W/C	12	6-6 M,T,R,F,& W 6 AM-9 PM 8-12 Sat	100		Perry
315	Ford	E-350	2019	1FDEE3FS7KDC61307	10 Passenger	2 W/C	12	6-6 M,T,R,F,& W 6 AM-9 PM 8-12 Sat	100		Perry
316	Ford	E-350	2021	1FDEE3FN8MDC25840	10 Passenger	2W/C	12	6-6 M,T,R,F,& W 6 AM-9 PM 8-12 Sat	100		Perry
317	Ford	E-350	2021	1FDEE3FNXMDC25855	10 Passenger	2 W/C	12	6-6 M,T,R,F,& W 6 AM-9 PM 8-12 Sat	100		Perry
	GMC	3500HD	2016	2FMHK6C86KBA37617	6 Passenger		6		80		Perry

Veh #	Make	Model	Year	Vin #	Capacity	WC Capacity	Days of the Week Vehicle is in Service	Service Hours	Vehicle Condition	Program to which Vehicle is Assigned (if applicable)	Service Area
Perry County Job and Family Services											
	Ford	Flex	2019	2FMHK6C87KBA36539	7	N/A	5	8:00-4:30 M - F	80	NEMT	Perry
	Ford	Flex	2019	2FMHK6C86KBA37617	7	N/A	5	8:00-4:30 M-F	80	NEMT	Perry
	Ford	Expedition	2020	1FMJK1GT4LEA22283	8	N/A	5	8:00-4:30 M-F	100	JFS	Perry
	Dodge	Durango	2014	1C4RDJAG0EC5 43738	7	N/A	5	8:00-4:30 M - F	90		Perry
	Ford	Explorer	2006	1FMEU72E16UB 58193	5	N/A	5	8:00-4:30 M - F	40		Perry
	Jeep	Patriot	2015	1C4NJRBB1FD3 54181	5	N/A	5	8:00-4:30 M - F	85	APS	Perry
	Ford	Explorer	2021	1FMSK8DH8MGA38750	5	N/A	5	8:00-4:30 M - F	100	R8MSC	Perry
	Chevy	Winnebago	1987	1GBJP37W3H3329216	2	N/A	5	8:00-4:30 M-F	10		Perry
Veh #	Make	Model	Year	Vin #	Capacity	WC Capacity	Days of the Week Vehicle is in Service	Service Hours	Vehicle Condition	Program to which Vehicle is Assigned (if applicable)	Service Area
Perry Behavioral Health Choices, Inc.											
	GMC	Savana	2007	1GJHG35U97120 9326						Stanton	
	Dodge	Grand Caravan	2015	2C4RDGBG4FR605541						Stanton	
	Dodge	Grand Caravan	2015	2C4RDGBG8FR530293						Evolution	
	Chevy	Express	2015	1GAWGRFGOF116728						Evolution	
	Toyota	Corolla	2014	1T1BURHE6EC165601						Outpatient	

	2017	SPOT	Trailer	4YMBC1224HG051280								
	2017	Toyota	Corolla	2T1BURHE4HC798053								
	2019	Chevy	Express	1GAZGPGXK1244552								
	Chevy	Cruz	2016	1G1PEISB6G7107270							Clearview	
	Toyota	Corolla	2016	2T1BURHE2GC590073							Youth and Family Services	
Veh #	Make	Model	Year	Vin #	Capacity	WC Capacity	Days of the Week Vehicle is in Service	Service Hours	Vehicle Condition	Program to which Vehicle is Assigned (if applicable)	Service Area	
Perry County Veterans Services												
664Y MS	FORD	FUSION	2013	3FA6P0H72DRZ 05158	4	N/A	5	M-F	GOOD	Veterans only		
630Y WA	DODGE	CARAVAN	2016	2C4RDGBG2G22 7687	7	N/A	5	M-F	GOOD	Veterans only		
761ZC A	FORD	ESCAPE	2018	FMCV9HD0JUB1 6351	4	N/A	5	M-F	GOOD	Veterans only		
Veh #	Make	Model	Year	Vin #	Capacity	WC Capacity	Days of the Week Vehicle is in Service	Service Hours	Vehicle Condition	Program to which Vehicle is Assigned (if applicable)	Service Area	
PerCo Inc												
1	Dodge	Grand Caravan SXT	2006	2DGP44L16R834737	7	0	As Needed	Our Discretion	Good	NA	Our Discretion	
2	Chrysler	Town & Country TOUR ED	2006	2A4GP54L663R861851	7	0	As Needed	Our Discretion	Good	NA	Our Discretion	
3	Dodge	Grand Caravan Brough	2012	2CRDGBGXCR254565	5	1	As Needed	Our Discretion	Good	NA	Our Discretion	
4	Dodge	Caravan SE	2018	2C7WDGBG8JR141104	5	2	As Needed	Our Discretion	Excellent	NA	Our Discretion	

5	Ford	Transit	2017	1FBAX2CGOHA33914	15	0	As Needed	Our Discretion	Excellent	NA	Our Discretion
6	Ford	Transit	2018	1FBAX2CG7JKA 19451	15	0	As Needed	Our Discretion	Excellent	NA	Our Discretion
7	Ford	Transit	2018	1FBAX2CG8JKB28503	15	1	As Needed	Our Discretion	Excellent	N/A	Our Discretion
8	Dodge	Caravan	2019	2C4RDG8GXXR78945	7	1	As Needed	Our Discretion	Excellent	N/A	Our Discretion
9	Ford	F-150	2020	1FTEW1E5XLKE70379	6		As needed	Our discretion	Excellent	N/A	Our discretion
Veh #	Make	Model	Year	Vin #	Capacity	WC Capacity	Days of the Week Vehicle is in Service	Service Hours	Vehicle Condition	Program to which Vehicle is Assigned (if applicable)	Service Area

Mount Aloysius

	Ford	E150	2010	1FDNE1E1ADA95827			7	24/7			
	Ford	Explorer	2017								
	Ford	F-250	1994	2FTHF26H4RCA 56672	2		7	24/7	40	Shop	
	Dodge	Bus	2000	ZB6LB31Z9YK179062			7	24/7	30		
	Ford	Transit	2018	NM0GE9F78J1366936							
	Ford	Freestar	2005	2FMZA57695BA 39764	4		7	24/7	40		
	Ford	E250	2006	1FBSS31L36HA 50404	15		7	24/7	80		
	Ford	Transit	2018	NM0GE9F75J1371513							
	Ford	Freestar	2007	2FMZA52237BA07240	3		7	24/7	40		

	Ford	Transit	2018	NM0GE9F73J1363838							
	Ford	E-350	2016	1FTRF3B68GEB38973							
	Chrysler	Pacifica	2016	2C4RC1EG0HR538192							
	Ford	Escape	2007	1FMYU92Z77KB 06785	3		7	24/7	40		
	Ford	Transit	2018	NM0GE9F76J1632741							
	Ford	Explorer	2007	1FMEU73E47UA78502	3		7	24/7	80		
	Champion	Bus	2016	1FDEE3FL2GDC0 7434	15		7	24/7	80		
Veh #	Make	Model	Year	Vin #	Capacity	WC Capacity	Days of the Week Vehicle is in Service	Service Hours	Vehicle Condition	Program to which Vehicle is Assigned (if applicable)	Service Area
SechKar											
1	Chevy	K10 Bus			8	1	5	7:30 AM-3:30PM			Perry
2	Ford	E250			10	1	5	7:30 AM-3:30PM			Perry
3	Dodge	Caravan			5	1	5	7:30 AM-3:30PM			Perry
Veh#	Make	Model	Year	VIN#	Capacity	WC Capacity	Days of the vehicle is in service	Service hours	Vehicle Condition	Program to which vehicle is assigned	Service Area
PCCMEP	HAPCAP										
1	Honda	CRV	2016	5J6RM4H73GL115005	5	0	M-F			HAPCAP	Perry

Veh #	Make	Model	Year	Vin #	Capacity	WC Capacity	Days of the Week Vehicle is in Service	Service Hours	Vehicle Condition	Program to which Vehicle is Assigned (if applicable)	Service Area
Fairview Assisted Living											
	Dodge	Caravan	2006		5	0	24/7	24/7			Perry
	Dodge	Caravan	2014		5	0	24/7	24/7			Perry

Summary of Existing Resources

Throughout Perry County there are multiple resources for transportation such as county entities, nonprofits and local businesses. Perry County’s primary source of public and contracted transportation is Perry County Transit (PCT). With a large number of vehicles on the road, PCT’s fleet consists of 31 vehicles with 100% of the vehicles being wheelchair accessible. Perry County is an on-demand response rural transit system. Over the last few years PCT has had equipment upgrades such as:

- Ecolane-On Demand Software with App Capability
- Bike Rack Accessible Vehicles
- WIFI accessibility /charging on board for passengers
- Camaras on board all vehicles
- Onsite maintenance unit at Perry County Transit
- MARCS Radios - PCT has coverage throughout the entire State of Ohio
- Tablets with GIS/AVL tracking

Other agencies throughout the county contract with PCT to meet their transportation needs, such as Perry County Job and Family Services, Perry County Board of Developmental Disabilities and local schools. Perry County Transit and PerCo,Inc is now certified to process Medicaid billing.

The following agencies have vehicles that are used for employees and clients, but not readily accessible to the public: Perry County Department of Job and Family Services, Perry County Board of Developmental Disabilities, Perry County Senior Center, Perry County Veteran Service Commission, Crooksville Exempted Village School District, New Lexington City Schools, Northern Local School District, Southern Local School District, Perry County Juvenile Court, Perry County Behavioral Health Choices Inc., Perry

County Emergency Management Agency, Perry County Help Me Grow, Perry County Head Start, Perry County Churches and Faith Base Organizations, Perry County Children Services, Fairview Assisted Living and the Perry County Health Department.

Perry County's Mobility Manager is currently tasked with coordinating services among the agencies listed above and educating the public on transportation options throughout Perry County. Through the coordination of services, Perry County's resource will be utilized to their maximum capacity and expanded upon based on the community's needs. Elderly and Disabled individuals will be informed of options that will allow them to lead an independent lifestyle.

IV. Assessment of Transportation Needs and Gaps

In an effort to better understand Perry County's needs, the planning committee examined research and data, as well as solicited input from the community in an effort to identify the needs and gaps in transportation services. The demographic and socio-economic conditions of the study area are discussed in the Demographics Chapter of this plan. The following overview is an evaluation of the gaps in service based upon geographic data as well as from the perspective of the targeted populations, transportation providers, and the general public.

Perry County Job and Family Services and a variety of stakeholders in the area attempt to solicit input and request participation from any organization that could potentially be impacted by the coordinated transportation planning process. More information on how the lead agency engaged stakeholder and the general public is available upon request.

The following methods were used to assess transportation needs and gaps

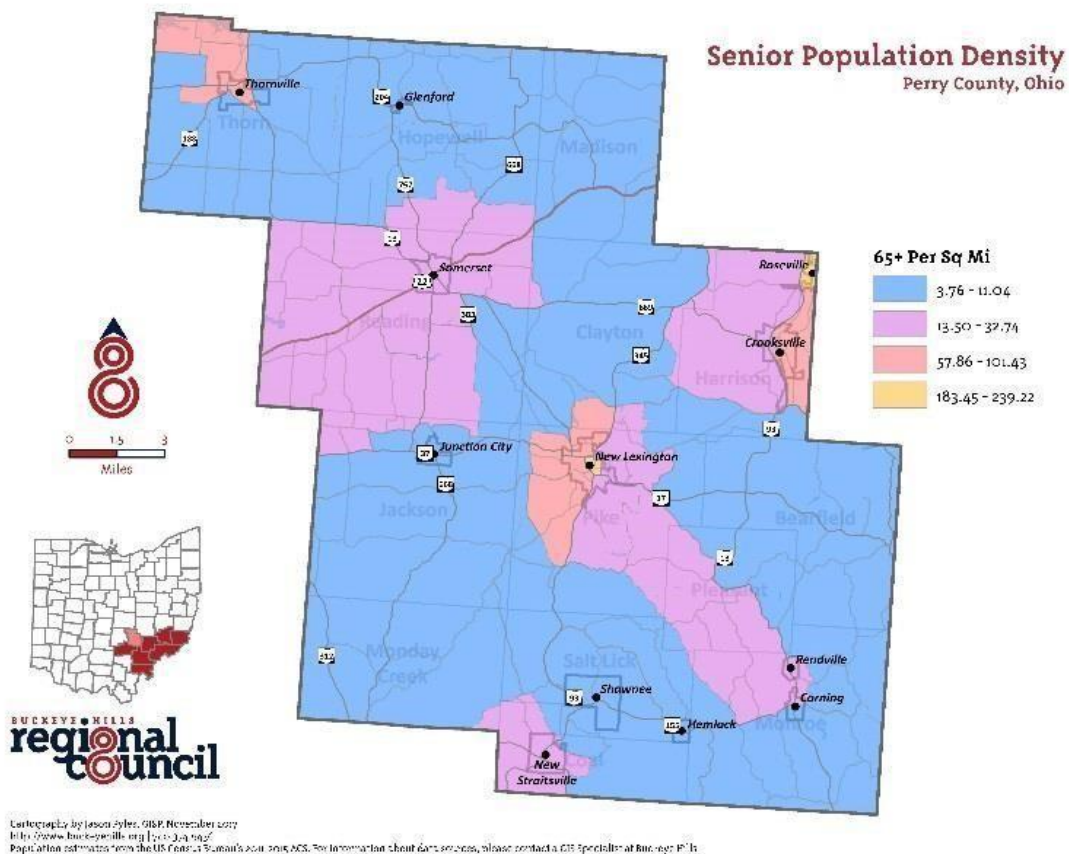
- Assessment of data, demographics, and public survey.
- Public Meetings, including virtual access.
- Representation at public events/speaking engagements.

Local Demographic and Socio-Economic Data

Data for each target population group were aggregated by Census Block Group for transportation analysis. The demographic and socio-economic data is valuable because a comparison of where the highest and lowest densities individuals who are most likely to need transportation live. This information can then be compared to the locations of major trip generators, and available transportation services.

The following exhibit illustrates the areas where the number of older adults (ages 65 and older) are at or above the Perry County Average.

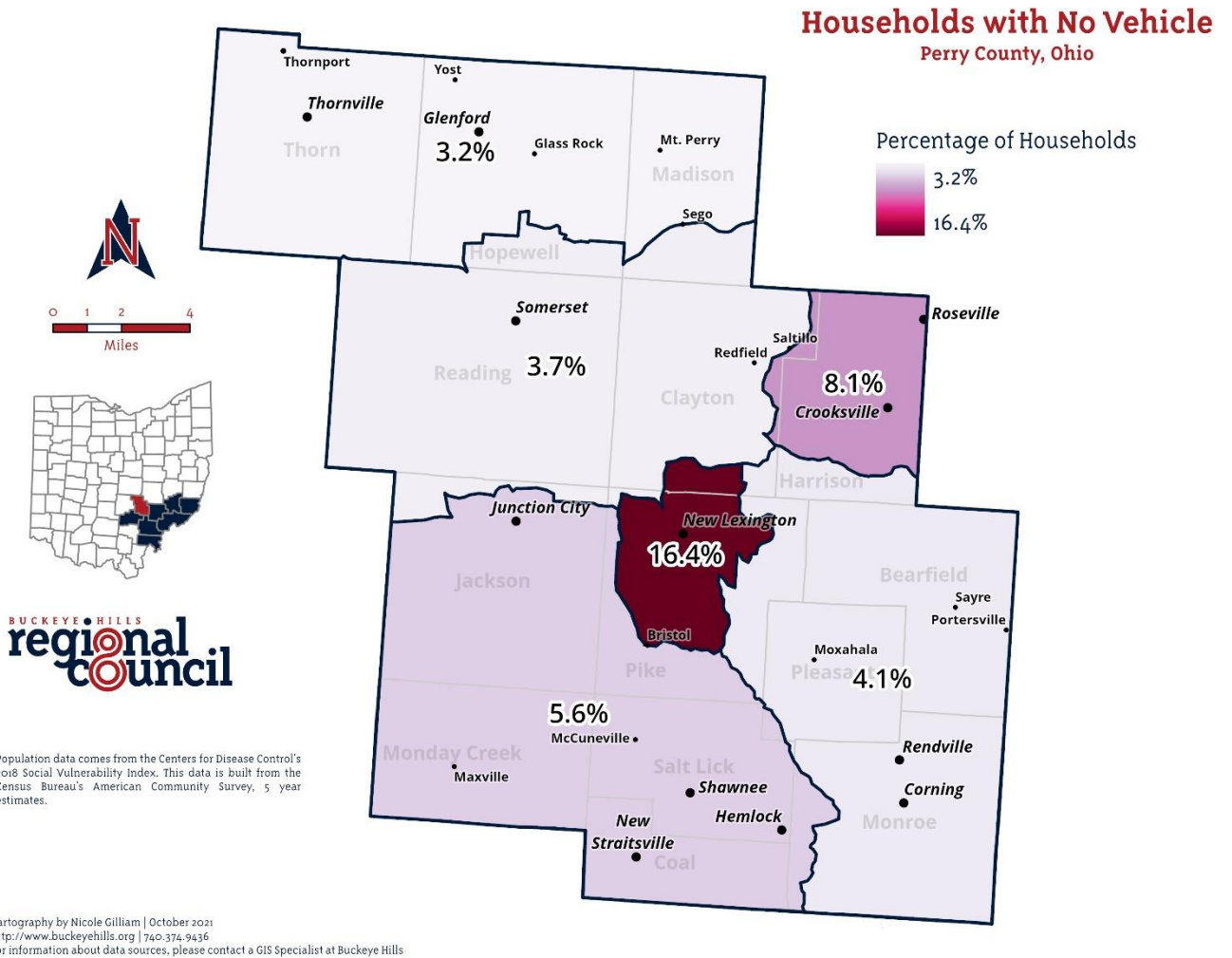
Exhibit 1: Map of Population Density of Individuals Age 65 and Older



T

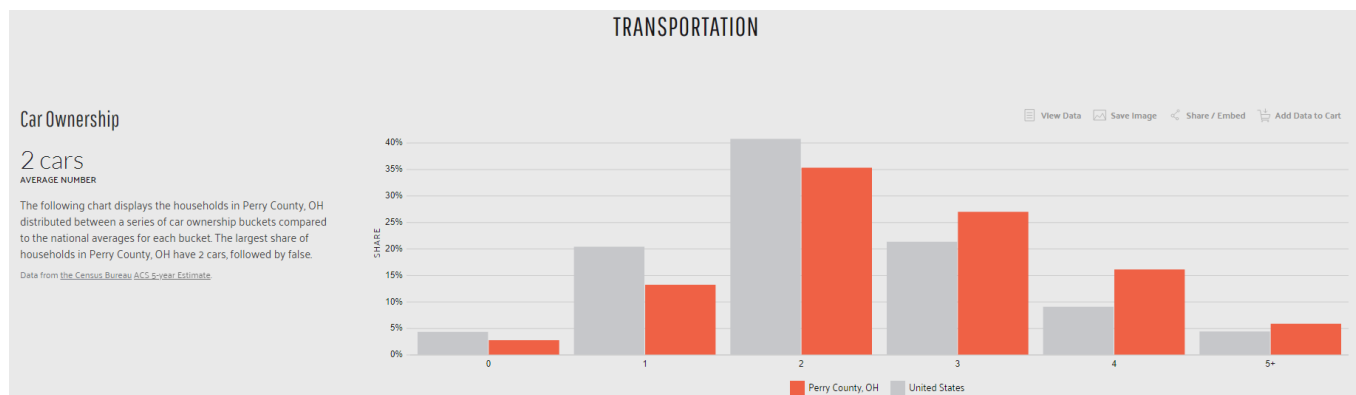
The exhibit below indicates the areas where the number of zero vehicle households is above the regional average. The absence of a vehicle in the household is often an indication of the need for transportation services.

Exhibit 2: Map of Density of Zero Vehicle Households



The absence of a vehicle in the household is often an indication of the need for transportation services. The following chart displays the households in Perry County, OH distributed between a series of car ownership buckets compared to the national averages for each bucket. The largest share of households in Perry County, OH have 2 cars, followed by 3 cars.

Exhibit 3: Chart Car Ownership Households



Analysis of Demographic Data

Demographics for Perry County note high rates of individuals with incomes below the federal poverty level when compared with state data (13.1%/12.7%). This is significant as higher rates of poverty are directly linked to poor health outcomes, low educational attainment and alcohol and substance abuse. Residents in need of services frequently have to travel long distances to receive services due to Perry County’s geographical location. Those living in poverty often do not have access to safe and reliable transportation. Seventeen-point seven percent (6392 residents) of the population report living with a disability. The Bureau of Transportation notes that 12.9% of individuals living with a disability do not have access to ADA accessible transportation.

General Public and Stakeholder Meetings/Focus Groups

Perry County Job and Family Services/Mobility Management hosted and facilitated 2 local meetings and focus groups to discuss the unfulfilled transportation needs and gaps in mobility and transportation. Over 50 people participated in the meetings. Additional information on the meeting agendas and attendance is available upon request.

During the meeting, Perry County Job and Family Services presented highlights of historical coordinated transportation in Perry County. Also, discussed where the activities since the last Coordinated Public Transit Human Services Transportation Plan that have helped to address some of the unmet transportation needs and gaps in services for the area.

Following the initial presentation, the stakeholders were asked to do the following:

1. Review gaps in transportation services and needs from the previous plan
2. Update and identify any gaps that were no longer valid
3. Address any new needs or gaps
4. 2021 Survey results reviewed

The focus of the discussion was transportation for older adults, individuals with disabilities, and people with low incomes. However, several topics discussed also impact mobility options for the general public.

Participants discussed more than three mobility issues to achieve, preserve, avoid, or eliminate through coordination during the meetings. Coordinated transportation stakeholders will consider these unmet needs when developing transportation goals and strategies and grant applications. The exhibit at the end of this section provides a summary of the unmet mobility needs discussed during the meeting as well as the needs identified by the survey results.

Surveys

In 2021, Perry County, Ohio conducted an Individual Transportation Survey. The following survey summary includes the information gained from the individual that complete the surveys. There were 172 surveys collected from the general public. Of those surveyed 37.21% of the individuals considered themselves to be disabled and 56.40% were older adults.

Exhibit 1: Age Demographics

The chart below demonstrates age categories of individuals that completed the transportation survey. According to the surveys, the largest age group was between 60-69, constituting nearly 29.65% of the survey's population. The second largest group was between ages 70 and 79, consisting of 21.51% of the survey's population. Approximately 59.88% of the survey's population was age 60 and older.

Q2 How old are you?

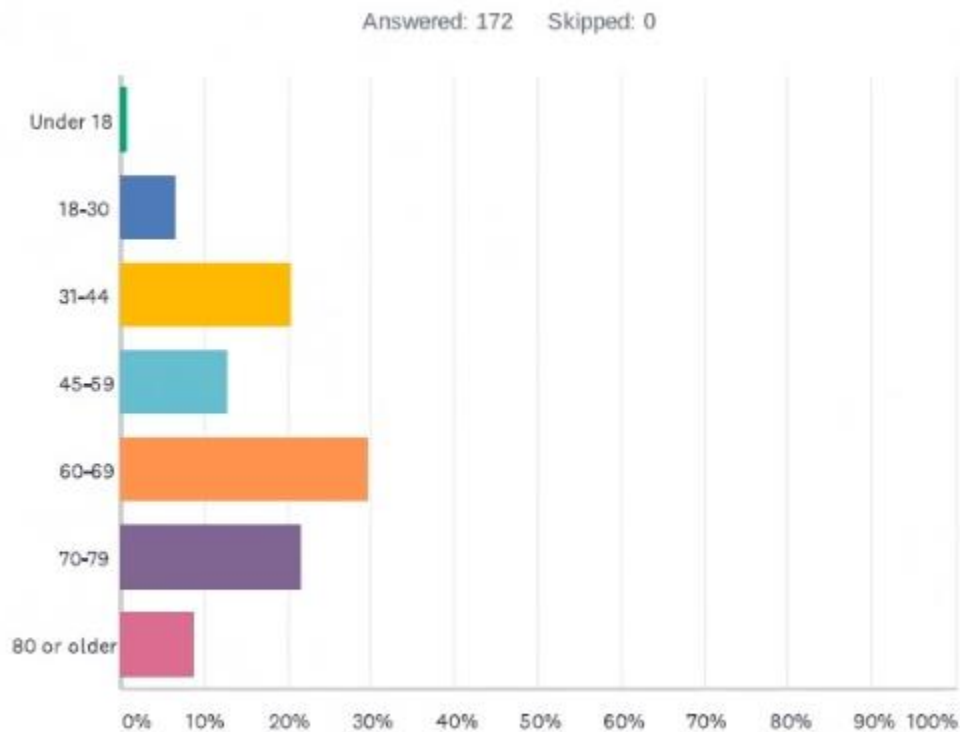
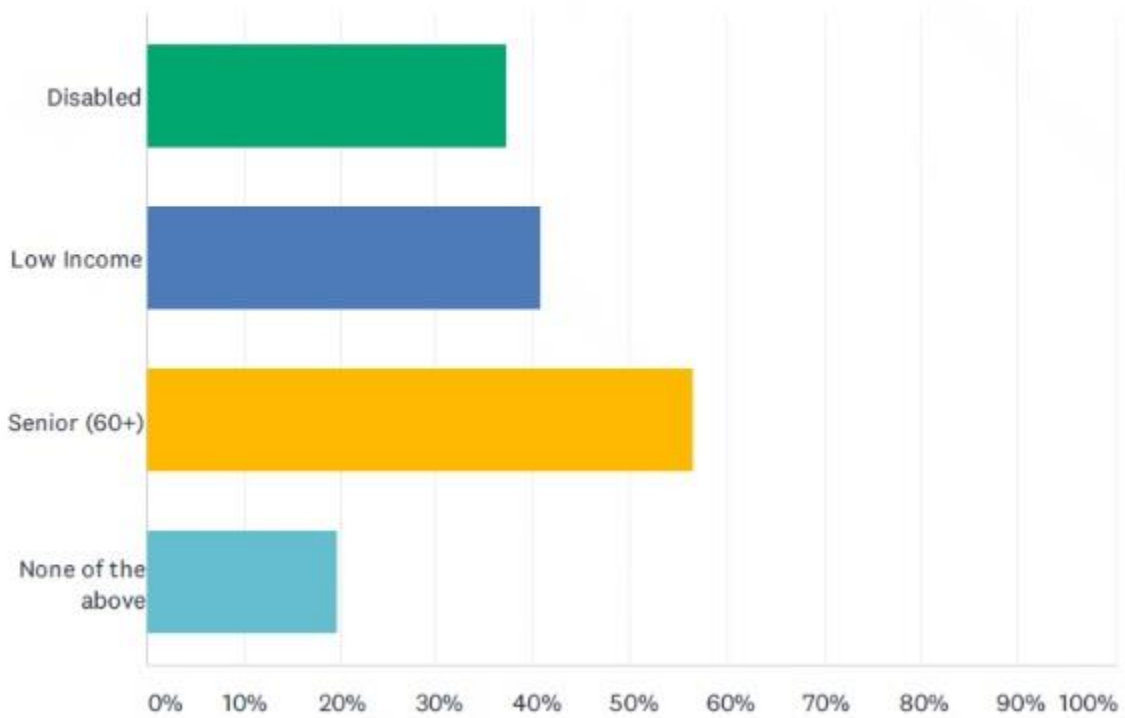


Exhibit 2: Target Demographics

The chart below demonstrates the target population regarding the plan. Only 19.77% of those surveyed did not identify as one of the target populations.

Q6 I consider myself (Check all that apply to you)

Answered: 172 Skipped: 0



The following chart shows examples as to what improvements Perry County residents would like to see in their transportation options. The majority of those surveyed feel that there are not enough transportation options when the primary public transportation system is not in operation.

Coordinated Plan Individual Survey

What improvements could be made to your local transportation options to make using them more appealing to you?

Answer Choices	Responses	
Fares/Fees	13.9%	17
Expansion of public transit hours	37.5%	34
Timeliness/late arrivals	30%	37
Excessive ride times	14.75%	18
Courtesy of Employees	16.4%	20
Safety Concerns	12.3%	14
Cleanliness	12.3%	15

Exhibit 4: Need for Transportation

The following data set represents the places and purpose Perry County Residents need transportation. The amount in each box will represent one individual compared to the total of 172 completed surveys. (Answers were not mutually exclusive.)

Places	Responses	Percentage
Medical	140	95.89%
Employment	48	32.88%
Shopping	119	81.51%
Recreation	47	32.19%
Other	14	9.59%

Exhibit 5: Destinations

The following data set represents the destination and purpose Perry County Residents need transportation. The amount in each box will represent one individual compared to the total of 172 completed surveys. (Answers were not mutually exclusive.)

County	Medical	Employment	Shopping	Recreation	Other
Perry	74	45	66	31	8
Muskingum	52	2	54	15	2
Fairfield	58	5	47	18	2
Licking	3	2	18	6	0
Morgan	2	0	0	0	0
Hocking	1	0	5	7	0
Athens	1	0	2	5	2
Franklin	11	2	5	4	5
Other	12	5	8	6	1

Challenges to Coordinated Transportation

In addition to identifying needs, the planning committee gathered information from stakeholders and used their own professional experience to identify challenges to providing coordinated transportation services. These challenges include the following:

- Communication and participation gaps among agencies and businesses
- Lack of evening and weekend transportation options
- Transportation for employment for 2nd and 3rd shifts is not available
- Marketing and education regarding transportation options.
- Access to safe active transportation routes.
- Decrease cost to the public
- Limited transportation providers in service area.

Summary of Unmet Mobility Needs

The following table describes the identified unmet transportation needs that were identified and the method used to identify and prioritize each need. Needs are listed in order of their rank in highest to lowest priority.

Exhibit 1: Prioritized Unmet Mobility Needs

Rank	Unmet Need Description	Method Used to Identify and Rank Need
1	Sustaining Mobility Management Project, Regionalization Partnering with Region 8 Mobility Solution Center	Surveys. Public and Planning Committee Input, TAC
2	Countywide Safety Campaign	Surveys. Public and Planning Committee Input, TAC
3	Marketing, Education, and Additional Transportation Options	Surveys. Public and Planning Committee Input, TAC
4	Low-Cost Transportation - underinsured/uninsured	Surveys. Public and Planning Committee Input
5	Expansion of Services and Projects	Surveys. Public and Planning Committee Input

V. Goals and Strategies

Developing Strategies to Address Gaps and Needs

Strategies for improving transportation for Perry County should address the service gaps and user needs identified in this plan if they are to be effective. As described, the gaps and unmet needs were based on information obtained from geographic analysis, the attendees participating in the meetings, and responses to the public survey.

Based on information gathered throughout the planning process, Perry County Job and Family Service, Perry County Mobility Management, along with the Planning Committee developed the following strategies to address the gaps and unmet transportation needs. Priority levels are assigned by considering the primary funding sources that could be available to support plan implementation compared to the importance of meeting this unmet need expressed by the public and stakeholders. Not all strategies are activities specifically eligible for funding under the existing programs, nor is it guaranteed that sufficient funding will be available to achieve every strategy identified. In addition, the local stakeholders will need to provide support and commit to pursuing the strategies if they are to be accomplished. Nonetheless, these strategies have been tailored to 5 of the identified primary gaps and needs.

Below is an outline describing the prioritized strategies to address each of the identified unmet transportation needs and gaps in service.

Goal #1:

Goal: Sustaining Mobility Management Project for coordination of services throughout Perry County. Regionalization partnering with Region 8 Mobility Solution Center.

Need(s) being addressed:

- 1.) Perry County has a large number of out of county trips which takes vehicles out of use for hours resulting in a limited number of trips that can be performed.
- 2.) Continued education and outreach regarding transportation options within Perry County.
- 3.) Coordination of services would eliminate duplicated trips while saving agencies money, and possibly lead to expanded hours/days of operation for public use.

Strategy 1.1:

Define strategy being implemented to achieve goal.

The Mobility Management Project includes the Mobility Manager seeking to identify transportation needs and work to achieve the outcomes of the Coordinated Plan. The Mobility Manager is responsible for actively coordinating with all of Perry Counties' agencies, organizations, and businesses in order to help reduce duplication of trips, out of county trips and educate the public on transportation options throughout Perry County. The Perry County Mobility Management Project does include media outreach, trainings, technology, and serves as the pilot for Region 8 Mobility Solution Center supporting regionalization for R8.

Timeline for Implementation: January 2023 to December 2026 (Depending on available funding to be continued in 2024).

Action Steps:

List the action steps associated with the strategy for achieving the goal.

- 1.) Continue to employ a Mobility Manager preferably with experience in the field.
- 2.) The Mobility Manager will continue to work with agencies in Perry County by hosting regular public meetings, offer travel trainings and distribute outreach materials.
- 3.) Continue the work of updating the coordinated plan to help identify any new unmet needs and develop goals to overcome those needs.
- 4.) Educate the population of Perry County about current transportation options.
- 5.) Attend trainings, develop outreach materials, and continue to develop a communication process to achieve coordinated transportation.
- 6.) Partnering with organizations to identify unmet needs, service gaps, and community resources throughout our 8-county region.

Parties Responsible for Leading Implementation: Perry County Job & Family Services/Mobility Management

Parties Responsible for Supporting Implementation: All Agencies that provide or create transportation in Perry County.

Resources Needed: ODOT, FTA and County Partners

Potential Funding Sources: 5310 Grant, OTP2, Other Agencies

Performance Measures/Targets:

- 1.) Organize multiple schedules and riders to eliminate duplication and reduce the number of out of county trips. Coordinate ride request with neighboring public transportation providers.
- 2.) Work with other transit focused organizations to secure funding to expand transportation.
- 3.) Improve customer contact by utilizing call notification software to minimize duplications and decrease the no show rate.
- 4.) Track outreach options to identify which methods provides the best results for targeted population categories.

Goal #2:

Goal: Continual progression with presenting Complete Streets Policies for each village and township located in Perry County. Currently three villages New Lexington, Roseville, and Somerset have policy that improve the safety for active commuters by addressing sidewalk structures. Specifically focusing on the Carroll Street Corridor Project and the Safe Routes to School Award (project development) in the village of New Lexington.

Need(s) being addressed:

- 1.) Raise awareness of the new laws involving slow moving vehicles including bicycles, wheelchairs, and pedestrian traffic on public roadways.
- 2.) Decrease auto/pedestrian/bicycle crashes throughout Perry County through education and awareness campaign.
- 3.) Increase the number of communities utilizing the “Your Move Ohio and Walk.Bike.Ohio” Campaign.
- 4.) Increase the number of communities with complete street policies and sidewalk projects to increase active commuter’s safety.

Strategy 2.1:

Define strategy being implemented to achieve goal.

Strategy for increasing the number of villages addressing complete streets and sidewalk development includes education to village councils and township trustees on complete streets and their ability to

improve active transportation/commuter safety. Education will include resources on the availability of funding through State, Federal, and local sources. Utilization of “Your Move Ohio, Walk.Bike.Ohio”, and Safe Routes to School materials involves the education and presentation of the “Your Move Ohio, Walk.Bike.Ohio”, and Safe Routes to School initiatives to three additional entities (currently being distributed in three Perry County communities) to garner support and increase the distribution of the campaign materials while providing county wide advertising of the initiative. Additional strategy includes the development of bicycle safety classes to decrease crashes between motorists, pedestrians and bicyclists. The Safe Routes to School award for New Lexington will also include education and outreach to encourage walking/biking for school purposes.

Timeline for Implementation: January 2023 to December 2026

Action Steps:

- 1). Continue to meet with additional village councils and township trustees to introduce complete street concept and to garner support of the “Your Move Ohio, Walk.Bike.Ohio”, and Safe Routes to School initiative.
- 2). Meet and serve with Perry County Sheriff’s Office, local Police Departments, Perry County Public Safety Team, 911/ Emergency Management Agency, and school officials, to introduce ideas of an active transportation safety education campaign.
- 3). Participate with police & sheriff officers in bicycle safety for families and individuals in Perry County.

Parties Responsible for Leading Implementation: Perry County Active Transportation Team

Parties Responsible for Supporting Implementation: Perry County Active Transportation Team, Perry County Health Department, Perry County Mobility Manager

Resources Needed: Community support, Your Move materials (ODH), Walk.Bike.Ohio (ODOT), 2021 Safe Routes to School Award (ODOT), location for campaign material distribution, advertising dollars, and training for local law enforcement in bicycle safety

Potential Funding Sources: ODOT, ODH, Public Safety, USDOT

Performance Measures/Targets:

- 1.) Measured by the number of villages/communities and townships applying for Complete Streets Funding or pursuing Safe Routes to School projects.
- 2.) Measured by the number of distribution sites for “Your Move Ohio, Walk.Bike.Ohio” , and Safe Routes to School campaign materials
- 3.) Measured by the number of county wide advertising campaigns completed.
- 4.) Measured by the number of law enforcement trained to provide bicycle/pedestrian safety classes
- 5.) Measured by the number of individuals receiving bicycle/pedestrian safety classes.
- 6.) Measured by the number of individuals utilizing the Perry County Bike Share Program.

Goal #3:

Goal: Provide a wide variety of transportation options that promote community access for people who are elderly, people with disabilities, and living below poverty guidelines.

Need(s) being addressed:

- 1.) Promote access which will allow for full integration into the community for healthcare, nutrition, education, employment, and recreation.
- 2.) With access to community functions or resources a person is able to tap into local opportunities and build new relationships improving upon daily living.
- 3.) Access to the community through walking paths and/or sidewalks and the expanded availability of various modes of transportation (cars, vans, bicycles, etc.)

Strategy 3.1:

Define strategy being implemented to achieve goal

Continue working with local authorities to assess current opportunities or resources which allows for community access as well as existing or potential barriers. We will also identify/document the number of people that will be impacted by the achievement of this goal. We will continue the strategic planning process to determine the steps needed to attain the goals/outlined in the Perry County Active Transportation Plan.

Timeline for Implementation: January 2023 to December 2026

Action Steps:

- 1.) Identify stakeholders who participates in the assessment and planning process.
- 2.) Assess current situation and devise multiple avenues for connecting with targeted populations.
- 3.) Work with stakeholders to continue the planning process to identify and prioritize for constant change.
- 4.) Maintain plan and continue to measure outcomes.

Parties Responsible for Leading Implementation: Perry County Mobility Management

Parties Responsible for Supporting Implementation: Relevant Stakeholders

Resources Needed: ODOT, Local Officials, Private sector

Potential Cost Range: To be determined

Potential Funding Sources: Grants, Local development money, private contributions

Performance Measures Targets:

- 1.) Measuring current access improvements to the prior practices after implementing new and innovative projects.
- 2.) Exploring funding opportunities that can be applied to specific project goals.
- 3.) Continuance of developing and delivering new projects, policies, and options related to transportation activities.

Goal #4:

Goal: To provide safe, effective, and dependable transportation for individuals residing in Perry County who are underinsured, uninsured, low wage employed individuals.

Need(s) being addressed: The transportation services are offered for medical, dental, and employment needs.

Strategy 4.1:

Define strategy being implemented to achieve goal

To coordinate or provide transportation for clients as needed to ensure access to medical, dental, and employment needs.

Timeline for Implementation: January 2023 to December 2026

Action Steps:

- 1.) To improve access to transportation for individuals in the targeted categories on an individual basis.
- 2.) Coordinate transportation services through transportation systems in place or use of agency vehicles.
- 3.) Explore and apply for grants opportunities which reduce/remove fare cost to the consumer.

Parties Responsible for Leading Implementation: Perry County Mobility Management

Parties Responsible for Supporting Implementation: Perry County Mobility Management

Resources Needed: ODOT and County Partners

Potential Funding Sources: Transportation Grants

Performance Measures Targets:

- 1.) Measured by a decrease in cancellation of or no-show appointments.
- 2.) Measured by an increase in number of individuals who become newly employed or retain current employment.
- 3.) Measured by better health outcomes based on access to medical care.

Goal #5:

Goal: Work with the Ohio Department of Transportation providing updated statistics on ride request approval/denials to explore avenues of service expansion. Continue to adapt items outlined in the Perry County Active Transportation Plan increasing active transportation options such as bicycle shared lanes, shoulder widening during pavement projects, and walkability structures.

Needs being addressed:

- 1.) Increase availability of public transportation based on ride demand.
- 2.) Encourage safe walking and bicycling options for access to employment and health care needs.
- 3.) Improve overall health outcomes for Perry County residents by providing safe routes for biking or walkable communities.

Strategy 5.1:

Work with the Ohio Department of Transportation exploring all avenues for walking and biking which includes resurfacing projects that includes establishment of sidewalks and bike lanes.

Timeline for Implementation: January 2023 to December 2026

Action Steps:

- 1.) Engage items outlined in Perry County Active Transportation Plan established in December 2019.
- 2.) Contact completed with ODOT District 5 on pavement resurfacing schedules in reference to the possibility of widening shoulders on state routes.
- 3.) Discuss feasibility of projects and pursue current funding opportunities under Public Safety.

Parties Responsible for Leading Implementation: Perry County Active Transportation Team, Perry County Health Department, Perry County Mobility Manager, Perry County Engineer, ODOT District 5

Parties Responsible for Supporting Implementation: Perry County Active Transportation Team, Perry County Health Department, Perry County Mobility Manager, Perry County Engineer, ODOT District 5

Resources Needed: ODOT and partner participation

Potential Cost Range: To Be Determined based on the availability of funding.

Performance Measures/Targets:

- 1.) Measured by the number of meetings held between responsible parties.
- 2.) Measured by the completion of feasibility study of the project.
- 3.) Measured by the number of miles of State Highway widened for active transportation access.
- 4.) Measured by the dates for completion of project.

VI. Plan Adoption

The Mobility Manager will use this plan to enhance relationships with public, private, and non-profits to meet the needs of all Perry County residents including those that are low-income, elderly, disabled, or general public. Public meetings will continue to be held in locations that are easily accessible to all residents and surveys will be collected regularly for data tracking. The Mobility Manager through this plan will continue to work on the following items:

- 1.) Expand the existing Planning Committee with addition of representatives from additional agencies and entities that either provide transportation or depend on it for their clients. Additionally, the committee can include local government representatives, as well as riders. This group should meet quarterly to discuss system wide progress, coordination, and its effectiveness in reaching those in need, and any recommendations for change.
- 2.) Promote the use of new technology to increase efficiency in operations. Further development of an interactive web site where users can schedule, make payments, check opportunities for travel sharing, and gather information about the transportation in Perry County. Enhancement to the current call notification system notifying users in advance for pick up times and return times. This is accomplished by email, text, or voice call notification. The use of GPS tracking to provide effective supervision and guidance of drivers and vehicles. Use of electronic payments methods such as pre-paid debit cards, electronic payments to a web site or tokens.
- 3.) Development of new opportunities for special needs population. Interaction with other transit authorities in neighboring counties with the goal to expand mobility to population centers outside of Perry County.
- 4.) Development of coordinated services or a shared services model to reduce duplicated services with the goal to increase services while reducing the cost for the both the user and other providers.
- 5.) Increase awareness and interaction with residents and groups throughout Perry County.

Appendix A: List of Planning Committee Participants

The planning committee consists of representation from local agencies as well as participation of individuals with disabilities, older adults, and members of the public. More information about the planning committee is available upon request by contacting Lisa Leckrone, Mobility Manager @ 740-342-5423 or Melissa.Leckrone@jfs.ohio.gov

Agency Representation

Name	First Last Name	Agency
Mark	Richards	New Lexington Healthcare & Rehabilitation
David	Couch	Perry County Board of Developmental Disabilities
Shelly	Lackey	Perry County Board of Developmental Disabilities
Morgan	Deavers	Perry County Board of Developmental Disabilities
Mason	Dickerson	Perry County Transit
Justin	Gall	Mount Aloysius
Tammy	Gonia	Perry County Job and Family Services
Renea	Dodson	Perry Behavioral Health
Deb	Houk	Region 8 Mobility Solution Center
Theressa	Kane	Perry Behavioral Health Choices
Jenny	LaRue	Perry County Health Department
Ruth	Liff-Gray	Retired Senior Volunteer Program
Melissa	Marolt	Perry County District Library
Jason	Adams	Genesis Perry County ER
Deborah	Raney	Perry County Health Department
Fred	Redfern	Community Advocate
Leslie	Finck	Perry County Job and Family Services
Dale	Factor	Northern Local School Transportation
Matt	Sheridan	Crooksville School District
Lisa	Leckrone	Perry County Job and Family Service
Sonya	Saxton	PerCo
Jay	Barnhart	PerCo
Darla	Channel	PerCo
Mendra	Hupp	Perry County Job and Family Services
Lillian	Holman	Fairview Assisted Living
Linda	Klingler	St. Vincent DePaul
Anne	Barnett	St. Vincent DePaul

In addition to participants listed above, the planning committee also included representation of older adults, people with disabilities, and members of the public. In addition to hosting a planning committee, Perry County Job and Family Services and other planning committee members also conducted a wide variety of activities designed to increase involvement of community stakeholders in identifying community resources, addressing community needs, and setting goals and priorities. More information about the efforts that occurred is available upon request.

To request additional information please contact:

Name: Lisa Leckrone

Agency: Perry County Job and Family Services/Mobility Management

Phone Number: (740) 342-5423

E-mail Address: Melissa.Leckrone@jfs.ohio.gov

Appendix B: List of Annual Reviews and Plan Amendments

It is required that this plan be reviewed by the planning committee annually. For more information on when the next annual review will occur, how to be involved in the annual review process or to request information on how to make changes or corrections to this plan between annual reviews, please contact:

Name: Lisa Leckrone

Agency: Perry County Job and Family Services/Mobility Management

Phone Number: (740) 342-5423

E-mail Address: Melissa.Leckrone@jfs.ohio.gov

Annual Review December 31, 2022

In 2022, one public meetings with virtual access was held on August 31, 2022 to review the plan and discuss transportation throughout the county. The Mobility Manager continues work in the county to address the goals and strategies of the coordinated plan. Several meetings and trainings have been facilitated and attended by the Mobility Manager to improve community wide transportation.

Planning committee members have been at work on several projects county wide in order to improve mobility for elderly, disabled, handicap and low-income individuals. Over the last year, several community partners have begun to provide transportation or increased their fleet to deliver additional transportation options to the community.

The need for alternate transportation brings about safety concerns and issues which are now able to be addressed on all levels as the Mobility Manager brings public awareness to the community on a variety of forums. Safety projects have been brought to the forefront of meetings to address these concerns.

Working together as a community has allowed for continued efforts to reach the goals in the coordinated plan which improves mobility options overall. Combined efforts have produced positive outcomes benefiting citizens of Perry County.

Amendment

Appendix C: Definitions

There are several terms used throughout the plan that may be unique to transportation providers or human service agencies. The terms are defined here for reference.

Coordination – Collaborative efforts toward understanding and meeting the mobility needs in the most appropriate, cost effective, and responsive manner.

FAST Act – Congress established the funding for Federal Transit Administration programs through authorizing legislation that amends Chapter 53 of Title 49 of the U.S. Code. On November 15, 2021, President Biden signed the Fixing America’s Surface Transportation (FAST) Act, reauthorizing surface transportation programs through Fiscal Year 2026.

Gaps in Service – A break in the continuity of available transportation resources such as a break between hours of operation or a break between two or more geographic areas.

Lead Agency – The organization responsible for facilitating outreach; composing a plan that meets the requirements of current Federal and State legislation; maintaining documentation from the planning process and making it available upon request; and leading stakeholders through annual reviews, amendments, and updates of the plan. The Lead Agency also is responsible for submitting the adopted Coordinated Plan and all amendments or updates to participating stakeholders and ODOT.

Planning Committee – The Planning Committee is composed of key community stakeholders. The Planning Committee members agree to actively participate in the planning process and act as the plan advisory and adopting entity.

Ridership – The total number of passengers who boarded transportation vehicles are counted each time they board a vehicle.

Section 5310 Program – Enhanced Mobility of Seniors & Individuals with Disabilities (49 U.S.C. 5310) provides Federal formula funding for the purpose of assisting private nonprofit groups in meeting the transportation needs of older adults and people with disabilities when the transportation service provided is unavailable, insufficient, or inappropriate to meeting these needs. The program aims to improve mobility for seniors and individuals with disabilities by removing barriers to transportation service and expanding transportation mobility options.

Section 5311 Program – The Formula Grants for Rural Areas program provides capital, planning, and operating assistance to states to support public transportation in rural areas with populations of less than 50,000 where many residents often rely on public transit to reach their destinations. The program also provides funding for state and national training and technical assistance through the Rural Transportation Assistance Program. Subrecipients may include state or local government authorities, nonprofit organizations, and operators of public transportation or intercity bus service.

Section 5307 Program – The Urbanized Area Formula Grants program (49 U.S.C. 5307) makes federal resources available to urbanized areas and to governors for transit capital and operating assistance in urbanized areas and for transportation-related planning. An urbanized area is an incorporated area with a population of 50,000 or more.

Transportation – Transportation is broadly defined to include traditional transit, human service agency services, on-demand (taxi-like) services, bicycle and pedestrian programs and amenities.

Unmet Transportation Needs – Transportation that is wanted or desired but is not currently available.