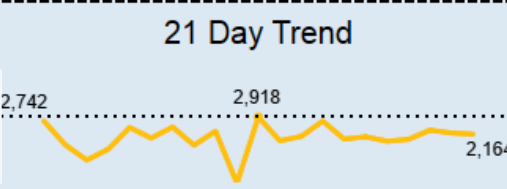





# COVID - 19 | Key Indicators

Last Updated: 04-15-21

Other states do not send death certificates to ODH's Bureau of Vital Statistics on a regular schedule and therefore fluctuations will be reflected in reported mortality data. Deaths are assigned to their appropriate date of death.

|                         | Total Reported Cases | Last 24 Hour Reported Cases Change | 21 Day Reported Case Average | 21 Day Trend   |
|-------------------------|----------------------|------------------------------------|------------------------------|--|
| <b>Cases</b>            | <b>1,048,109</b>     | <b>2,164</b>                       | <b>1,997</b>                 |   |
| <b>Hospitalizations</b> | <b>54,636</b>        | <b>181</b>                         | <b>100</b>                   |   |
| <b>ICU Admissions</b>   | <b>7,604</b>         | <b>31</b>                          | <b>11</b>                    |   |
| <b>Deaths</b>           | <b>18,917</b>        | <b>0</b>                           | <b>25</b>                    |  |

All dates are based when an indicator is reported and will not match data in other COVID-19 dashboards provided by the Ohio Department of Health. All other dashboards are based on onset date, date of hospitalization, or date of death.

Mortality data is verified by coded death certificate information received from the National Center for Health Statistics, and can take some time to receive. This information is not available daily, and is updated approximately twice per week as data is received.

\*\*Starting 03/02/2021, the COVID-19 death data will be reported from the Electronic Deaths Registration System. The "Last 24 Hour Reported Change", "21 Day Reported Average" and "21 Day Trend" metrics will initially be incomplete but will continue to be updated.

Note: Totals include Confirmed and CDC Expanded Case Definition (Probable)

# Statewide: Vaccine Status

By Total and % of Population

# Started (1<sup>st</sup> Dose)

For single dose vaccines, individuals are counted in both the "Vaccine Started" and "Vaccine Completed" categories.

Vaccine Started\*, Change from Last 24 Hours\*\*\*\*

**49,075**

Vaccine Started\* by Population

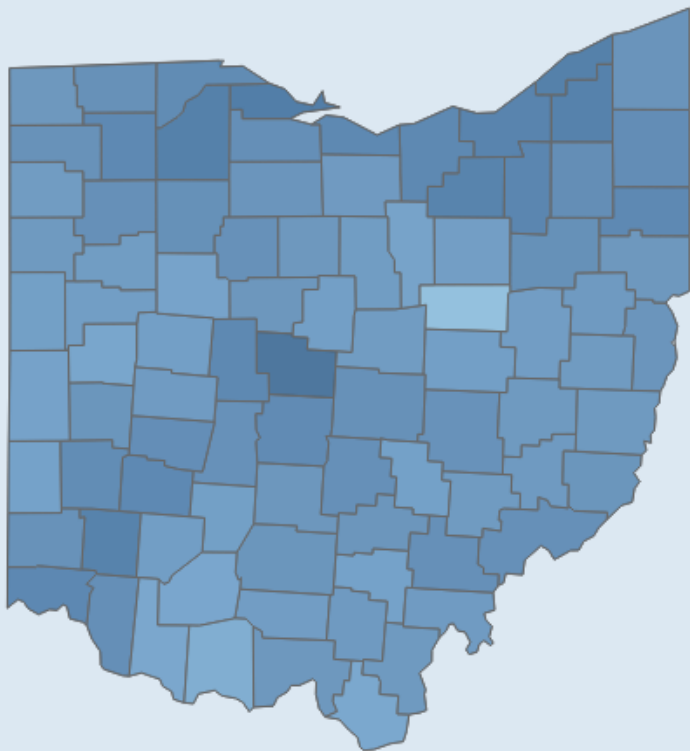
**36.40%**

Vaccine Started\*, Total

**4,254,389**

## Click County to Filter Metrics

Counties are colored by % of Population with Vaccine Started\*



© 2021 Mapbox © OpenStreetMap

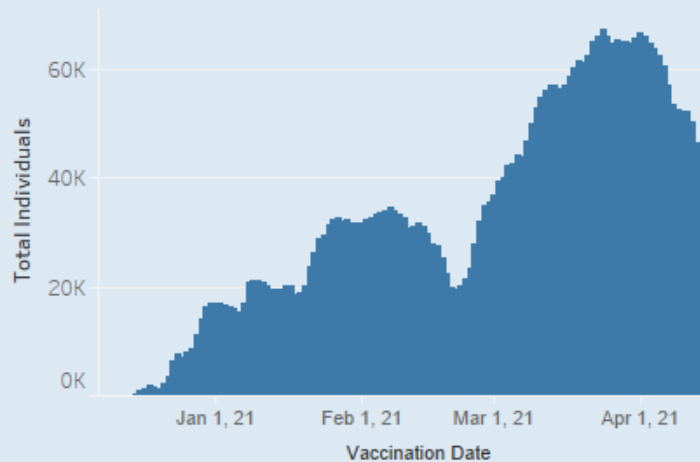
Residency Not Reported  
**9,090**

Residents of Other States - Vaccinated in Ohio  
**120,204**

## By Age Group

|       |        |         |
|-------|--------|---------|
| 0-19  | 3.80%  | 109,623 |
| 20-29 | 24.59% | 381,866 |
| 30-39 | 32.01% | 472,819 |
| 40-49 | 39.39% | 546,393 |
| 50-59 | 48.48% | 747,552 |
| 60-64 | 60.60% | 482,668 |
| 65-69 | 71.36% | 475,902 |
| 70-74 | 77.00% | 402,258 |
| 75-79 | 74.62% | 266,849 |
| 80+   | 73.77% | 368,459 |

## 7-Day Moving Average



## By Ethnicity

|                        |        |           |
|------------------------|--------|-----------|
| Not Hispanic or Latino | 29.41% | 3,299,391 |
| Unknown                | NA     | 853,190   |
| Hispanic or Latino     | 21.64% | 101,808   |

## By Race

|                                  |        |           |
|----------------------------------|--------|-----------|
| White                            | 35.37% | 3,378,353 |
| Black or African American        | 20.00% | 305,093   |
| Unknown                          | NA     | 222,063   |
| Other                            | NA     | 207,615   |
| Asian                            | 41.20% | 120,094   |
| Multiracial                      | 3.31%  | 9,213     |
| American Indian Alaska Native    | 26.09% | 8,873     |
| Native Hawaiian Pacific Islander | 43.73% | 3,085     |

# All 88 Ohio Counties Ranked by Highest Occurrence COVID-19 Cases

The 14-day period used for this table covers data from March 31 to April 13. The data were pulled on April 14 and exclude incarcerated individuals. Shaded counties meet the Centers for Disease Control and Prevention definition of "high incidence" of COVID-19.

| COUNTY    | Cases Per 100K<br>(03/31 to 04/13) | Case Count<br>(03/31 to 04/13) | POPULATION | COUNTY     | Cases Per 100K<br>(03/31 to 04/13) | Case Count<br>(03/31 to 04/13) | POPULATION | COUNTY     | Cases Per 100K<br>(03/31 to 04/13) | Case Count<br>(03/31 to 04/13) | POPULATION | COUNTY     | Cases Per 100K<br>(03/31 to 04/13) | Case Count<br>(03/31 to 04/13) | POPULATION |
|-----------|------------------------------------|--------------------------------|------------|------------|------------------------------------|--------------------------------|------------|------------|------------------------------------|--------------------------------|------------|------------|------------------------------------|--------------------------------|------------|
| Lucas     | 341.1                              | 1,461                          | 428,348    | Seneca     | 204.8                              | 113                            | 55,178     | Marion     | 158.2                              | 103                            | 65,093     | Mercer     | 102.0                              | 42                             | 41,172     |
| Hancock   | 304.8                              | 231                            | 75,783     | Ashtabula  | 199.5                              | 194                            | 97,241     | Geauga     | 154.8                              | 145                            | 93,649     | Van Wert   | 99.0                               | 28                             | 28,275     |
| Summit    | 300.9                              | 1,628                          | 541,013    | Fulton     | 199.4                              | 84                             | 42,126     | Champaign  | 151.7                              | 59                             | 38,885     | Washington | 98.5                               | 59                             | 59,911     |
| Cuyahoga  | 280.9                              | 3,469                          | 1,235,072  | Belmont    | 197.0                              | 132                            | 67,006     | Stark      | 151.1                              | 560                            | 370,606    | Morgan     | 96.5                               | 14                             | 14,508     |
| Sandusky  | 268.3                              | 157                            | 58,518     | Mahoning   | 185.0                              | 423                            | 228,683    | Monroe     | 146.5                              | 20                             | 13,654     | Logan      | 96.3                               | 44                             | 45,672     |
| Erie      | 268.0                              | 199                            | 74,266     | Crawford   | 183.2                              | 76                             | 41,494     | Hamilton   | 146.3                              | 1,196                          | 817,473    | Meigs      | 96.0                               | 22                             | 22,907     |
| Madison   | 266.0                              | 119                            | 44,731     | Putnam     | 183.1                              | 62                             | 33,861     | Wayne      | 146.1                              | 169                            | 115,710    | Lawrence   | 90.8                               | 54                             | 59,463     |
| Wood      | 253.0                              | 331                            | 130,817    | Licking    | 182.1                              | 322                            | 176,862    | Pickaway   | 145.4                              | 85                             | 58,457     | Guernsey   | 87.5                               | 34                             | 38,875     |
| Jefferson | 252.6                              | 165                            | 65,325     | Medina     | 178.6                              | 321                            | 179,746    | Jackson    | 145.0                              | 47                             | 32,413     | Tuscarawas | 87.0                               | 80                             | 91,987     |
| Defiance  | 246.8                              | 94                             | 38,087     | Darke      | 178.0                              | 91                             | 51,113     | Muskingum  | 141.5                              | 122                            | 86,215     | Adams      | 83.0                               | 23                             | 27,698     |
| Clark     | 246.1                              | 330                            | 134,083    | Perry      | 177.1                              | 64                             | 36,134     | Columbiana | 134.5                              | 137                            | 101,883    | Brown      | 80.6                               | 35                             | 43,432     |
| Lake      | 235.9                              | 543                            | 230,149    | Union      | 174.6                              | 103                            | 58,988     | Wyandot    | 133.2                              | 29                             | 21,772     | Scioto     | 77.0                               | 58                             | 75,314     |
| Fairfield | 233.5                              | 368                            | 157,574    | Pike       | 172.8                              | 48                             | 27,772     | Butler     | 130.0                              | 498                            | 383,134    | Shelby     | 76.1                               | 37                             | 48,590     |
| Lorain    | 232.1                              | 719                            | 309,833    | Athens     | 169.9                              | 111                            | 65,327     | Miami      | 129.9                              | 139                            | 106,987    | Carroll    | 70.6                               | 19                             | 26,914     |
| Delaware  | 231.4                              | 484                            | 209,177    | Trumbull   | 169.7                              | 336                            | 197,974    | Vinton     | 129.9                              | 17                             | 13,085     | Holmes     | 70.5                               | 31                             | 43,960     |
| Franklin  | 230.8                              | 3,039                          | 1,316,756  | Huron      | 166.5                              | 97                             | 58,266     | Ashland    | 127.1                              | 68                             | 53,484     | Highland   | 67.2                               | 29                             | 43,161     |
| Greene    | 227.3                              | 384                            | 168,937    | Knox       | 163.7                              | 102                            | 62,322     | Clinton    | 119.1                              | 50                             | 41,968     | Coshocton  | 65.6                               | 24                             | 36,600     |
| Williams  | 226.2                              | 83                             | 36,692     | Montgomery | 160.4                              | 853                            | 531,687    | Clermont   | 114.3                              | 236                            | 206,428    | Paulding   | 64.3                               | 12                             | 18,672     |
| Richland  | 218.7                              | 265                            | 121,154    | Allen      | 160.2                              | 164                            | 102,351    | Hocking    | 113.2                              | 32                             | 28,264     | Gallia     | 53.5                               | 16                             | 29,898     |
| Ottawa    | 217.1                              | 88                             | 40,525     | Auglaize   | 159.9                              | 73                             | 45,656     | Preble     | 112.5                              | 46                             | 40,882     | Noble      | 48.5                               | 7                              | 14,424     |
| Ross      | 213.9                              | 164                            | 76,666     | Warren     | 159.8                              | 375                            | 234,602    | Hardin     | 111.6                              | 35                             | 31,365     | Harrison   | 46.5                               | 7                              | 15,040     |
| Portage   | 213.6                              | 347                            | 162,466    | Henry      | 159.2                              | 43                             | 27,006     | Morrow     | 110.4                              | 39                             | 35,328     | Fayette    | 45.6                               | 13                             | 28,525     |



[coronavirus.ohio.gov](https://coronavirus.ohio.gov)

# Top 20 Ohio Counties Ranked by Highest Occurrence COVID-19 Cases

The 14-day period used for this table covers data from March 31 to April 13.  
The data were pulled on April 14 and exclude incarcerated individuals.

| COUNTY    | Cases Per 100K<br>(03/31 to 04/13) | Case Count<br>(03/31 to 04/13) | POPULATION |
|-----------|------------------------------------|--------------------------------|------------|
| Lucas     | 341.1                              | 1,461                          | 428,348    |
| Hancock   | 304.8                              | 231                            | 75,783     |
| Summit    | 300.9                              | 1,628                          | 541,013    |
| Cuyahoga  | 280.9                              | 3,469                          | 1,235,072  |
| Sandusky  | 268.3                              | 157                            | 58,518     |
| Erie      | 268.0                              | 199                            | 74,266     |
| Madison   | 266.0                              | 119                            | 44,731     |
| Wood      | 253.0                              | 331                            | 130,817    |
| Jefferson | 252.6                              | 165                            | 65,325     |
| Defiance  | 246.8                              | 94                             | 38,087     |
| Clark     | 246.1                              | 330                            | 134,083    |
| Lake      | 235.9                              | 543                            | 230,149    |
| Fairfield | 233.5                              | 368                            | 157,574    |
| Lorain    | 232.1                              | 719                            | 309,833    |
| Delaware  | 231.4                              | 484                            | 209,177    |
| Franklin  | 230.8                              | 3,039                          | 1,316,756  |
| Greene    | 227.3                              | 384                            | 168,937    |
| Williams  | 226.2                              | 83                             | 36,692     |
| Richland  | 218.7                              | 265                            | 121,154    |
| Ottawa    | 217.1                              | 88                             | 40,525     |



**MIKE DEWINE**  
GOVERNOR OF OHIO



Department  
of Health

[coronavirus.ohio.gov](https://coronavirus.ohio.gov)

# Top Counties by Cases Per 100K

March 31  
to April 13

#IN THIS  
TOGETHER   
**Ohio**



**MIKE DEWINE**  
GOVERNOR OF OHIO



[coronavirus.ohio.gov](https://coronavirus.ohio.gov)



Department  
of Health

# Ohio COVID-19 Case Rate

March 31 to April 13

Statewide average for cases  
per 100,000 population

---

**200.0**

---



**MIKE DEWINE**  
GOVERNOR OF OHIO

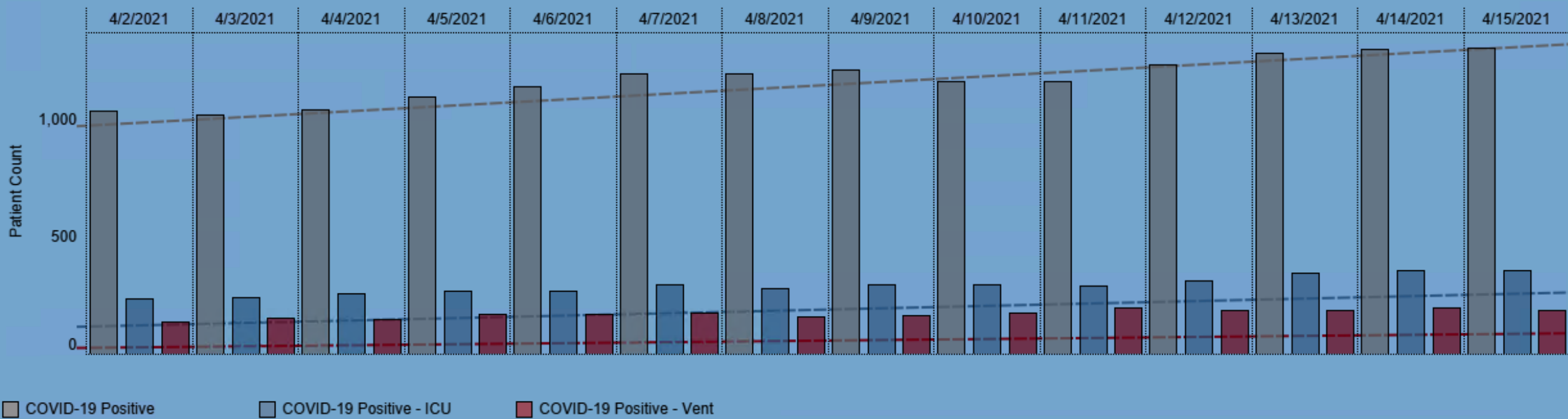


Department  
of Health

[coronavirus.ohio.gov](https://coronavirus.ohio.gov)

# Current Confirmed COVID - 19 Patient Count in Ohio Hospitals by Day\*

1,037 1,019 1,043 1,097 1,138 1,193 1,193 1,214 1,162 1,163 1,234 1,282 1,300 1,305



\*Reported to the Ohio Department of Health by the Ohio Hospital Association. Data as of 04/15/2021.

# Ohio's



## Mass Vaccination

### CLINIC

Sign up now to get a no-cost  
COVID-19 vaccine at  
[gettheshot.coronavirus.ohio.gov](https://gettheshot.coronavirus.ohio.gov)  
or by calling **1-833-4-ASK ODH**  
or **1-833-427-5634**.

Clinic Sponsors



FEMA



**APPOINTMENTS OPEN NOW**

## **MAPLE HEIGHTS**

5398 Northfield Rd. – FREE PARKING  
Maple Heights, OH 44137

*Call 2-1-1 for Free Transportation*

**Pfizer First Doses - April 16 & 17**  
**HOURS 7 a.m. – 6 p.m.**

*Second  
Doses –  
Scheduled  
on Site*



**MIKE DEWINE**  
GOVERNOR OF OHIO



Department  
of Health